



Message by the Co-Chairs

We are excited to take on the role of new Co-Chairs of the Warsaw International Mechanism for Loss and Damage Executive Committee (WIM ExCom). As WIM ExCom members, we have witnessed significant progress on the loss and damage agenda. At COP 28, Parties adopted decisions operationalizing loss and damage funding arrangements, including a fund, and approved the Memorandum of Understanding with the host consortium for the Santiago network, established as part of the Mechanism.

At COP 28, we also commemorated [10 Years](#) of the Warsaw International Mechanism. The WIM ExCom put together a [Photo Exhibition](#), “Loss and Damage in Focus”, and reflected on the impacts of the Mechanism and its contributions in the future.

In this edition of the WIM ExCom e-Update, you will read about the work the WIM ExCom and our thematic expert groups have done so far this year. As we enter the second half of the year, we look forward to advancing the functions of the Warsaw International Mechanism. This includes the organization of the second all-expert group meeting in conjunction with the 21st meeting of the WIM ExCom in September, which will spotlight the cross-cutting dimensions of our work. Finally, we look forward to the third review of the Warsaw International Mechanism, to be conducted at COP 29, where Parties will provide guidance on our work going forward in light of the evolving loss and damage support landscape.

We are eager to roll up our sleeves to contribute to guiding the Mechanism in our new role as its Co-Chairs. We hope to see you at the Bonn Climate Change Conference (60th sessions of the Subsidiary Bodies) in Bonn, Germany, and we invite you to meet the members of the WIM ExCom at our side event as highlighted in this e-update.

Camila Rodriguez and Sierra Woodruff

Co-Chairs of the Executive Committee of the Warsaw International Mechanism for Loss and Damage



HIGHLIGHTS

The WIM ExCom at NAP Expo 2024



WIM ExCom session tackles integrating human mobility in National Adaptation Plans

The WIM ExCom organized a 90-minute [technical session](#) with the support of the [Task Force on Displacement](#) at the [2024 NAP Expo](#), held in Dhaka, Bangladesh. The session drew attention to the linkages between human mobility and climate change in planning processes, including how integrating mobility considerations, such as planned relocation and labour migration, can contribute to adaptation strategies, and specifically how NAPs can be used for enhancing action in this regard. Find out more [here](#).



WIM ExCom presents upcoming 2024 technical guides and knowledge products at [session](#) on new supplements and the latest resource materials on NAPs (LEG, NAP technical guidelines subgroup)

On the last day of the NAP Expo, the WIM ExCom participated in the session on new supplements to the technical guidelines for the formulation and implementation of NAPs, organized by the Least Developed Countries Expert Group (LEG). The WIM ExCom presented the six technical guides and two knowledge products being developed with its expert groups, all scheduled for publication in 2024.

WIM ExCom side event at SB 60

Learning from countries and communities responding to non-economic loss and damage: Implementation updates by the Warsaw International Mechanism for Loss and Damage Executive Committee

The WIM ExCom will convene a side event on 4 June from 1:15 p.m. to 2:30 p.m. CET in Room Berlin, World Conference Center in Bonn, Germany. This event will bring together different perspectives from governments, international organizations, and indigenous and scientific communities to enhance the understanding of working approaches and good practices for responding to non-economic losses and the nexus between non-economic losses and other forms of loss and damage. Visit the side event [webpage](#) for more information.

For information regarding all the official side events at SB 60 and more, visit the [UNFCCC Calendar](#) and the [SB 60 webpage](#).



WIM EXCOM IMPLEMENTATION UPDATES

Latest meeting of the WIM ExCom elects new Co-Chairs, adopts decision points to advance technical work and the new mandates from CMA 5 and COP 28

The [20th meeting of the WIM ExCom](#), ExCom 20, took place from 12 to 15 March in Bonn, Germany. The WIM ExCom welcomed four new members, two representing non-Annex I Parties and two representing Annex I Parties. See the WIM ExCom [Membership page](#) for information on current members. The WIM ExCom elected Ms. Camila Rodriguez (Dominican Republic) and Ms. Sierra Woodruff (USA) as its Co-Chairs for the term of one year. ExCom 20 adopted a set of [decision points](#) based on relevant mandates from CMA 5 and COP 28. The collaboration with the Santiago network was discussed and insights on Indigenous knowledge informing loss and damage policymaking were presented.

WIM ExCom collaboration and synergies with other UNFCCC constituted

Identifying synergies with the Adaptation Committee's NAP Taskforce: On 28 February, the WIM ExCom participated in the first meeting in 2024 of the Adaptation Committee's Taskforce on National Adaptation Plans (NAP Taskforce) and provided inputs on possible synergies between the NAP Taskforce and the work of the WIM ExCom.

Enhancing gender-responsiveness in knowledge and practice: The WIM ExCom responded to the call for inputs on *progress and priorities in implementing the gender action plan, categorized by deliverable or output for each activity under the gender action plan, and on future work to be undertaken on gender and climate change*, as per decision 15/CP.28, para 2. The work of the WIM ExCom aims to contribute to the climate-gender knowledge nexus by making its communication and knowledge products gender-responsive. The [submission](#) presents the progress made by the WIM ExCom on the inclusion of gender considerations, as well as gaps and recommendations for future action concerning gender-responsiveness in the context of the work of the WIM ExCom and its technical expert groups.

Contributing to the Santiago network Advisory Board: The WIM ExCom was represented by two members in the first meeting of the Advisory Board of the Santiago network, held from 18 to 20 March 2024 in Geneva, Switzerland. The Advisory Board elected Mr. Alpha Kaloga and Mr. Akio Takemoto as its Co-Chairs and proceeded to select Geneva as the location of the head office of the Santiago network secretariat. It further discussed how to operationalize the Santiago network, which included approval of the work programme and the 2024 estimated budget. The WIM ExCom contributed to the discussion on the vision and expectations of the Advisory Board, including its work within the broader structure of the WIM and its relationship with the WIM ExCom. The work on operational procedures and important modalities for technical assistance and on the designation of organizations, bodies, networks and experts as members of the Santiago network was initiated and will continue at the second Advisory Board meeting to be held from 2 to 4 July in Geneva.

Working with the Technology Executive Committee: On 18 April, the WIM ExCom took part in the 28th [meeting](#) of the Technology Executive Committee (TEC 28), to share insights on WIM ExCom work relevant to early warning systems and on possible entry points to build and strengthen potential synergies between the two bodies.

WIM ExCom cooperates with the SBI Chair for the organization of the third Glasgow Dialogue

The WIM ExCom provided inputs to the SBI Chair for the organization of the third Glasgow Dialogue, taking place from 6 to 7 June, from 10 a.m. to 1 p.m. CET at the World Conference Center in Bonn, Germany. Established at COP26 and involving Parties, relevant organizations and stakeholders, the third session of the Glasgow Dialogue will focus on enhancing coherence and coordination across the loss and damage support architecture and the role of the funding arrangements in this context. It will provide an opportunity to discuss the progress made so far and further recommendations for scaling up or enhancing existing and initiating new funding arrangements for responding to loss and damage. The Co-Chairs of the WIM ExCom will facilitate the breakout group discussions along with the Co-Chairs of Santiago network Advisory Board and the Board of the Fund for responding to loss and damage. Visit the event [webpage](#) for more information.



New look for the WIM and WIM ExCom webpages

The WIM landing page and the ExCom webpage have been enhanced. Check out the new look on the [WIM webpage](#) and [WIM ExCom webpage](#).

UPDATES ON THE PLAN OF ACTION OF THEMATIC EXPERT GROUPS

Expert Group on Slow Onset Events (SOEs)



Second Plan of Action developed

The SOEs Expert Group developed its [second Plan of Action \(PoA\)](#). The initial aim of this second PoA will be to produce the three technical guides associated with sea level rise, desertification and glacial retreat, designed to support developing countries that are particularly vulnerable to the adverse effects of climate change. These guides will present approaches that can be taken to respond to these risks in a timely manner, taking into account regional particularities, traditional knowledge and local practices. More information about the technical guides [here](#).

Updates on the last meeting of the Expert Group on Slow Onset Events

The 11th meeting of the SOEs Expert Group (SOEs 11) took place on 23 May. The meeting focused on the status of the development of its technical guides on sea level rise and desertification. WIM ExCom members also shared information on the planned events at SB 60, and briefly introduced the plan for organizing a meeting of all expert groups of the WIM ExCom in conjunction with ExCom 21.

Update of the technical paper on Non-economic losses (Activity 1 of the NELs expert group [Plan of Action](#)) in progress

The NELs Expert group is developing a knowledge product to present a spectrum of actions implemented by countries and communities to anticipate, prevent, and respond to key types of non-economic losses. UN agencies, IGOs and NGOs submitted several case studies containing information on approaches concerning loss of territory, loss of ecosystem services and environmental degradation, and loss of cultural heritage. They present diverse aspects of integrating key non-economic losses considerations into policies and planning, and immediate, early response or long-term resilience efforts, and of engaging those that are at the forefront of climate change. Learn more about how communities are responding to non-economic losses by visiting this [webpage](#).

Spotlight on: The WE-WE' approach, a water entrepreneurship model to empower women in climate-vulnerable communities in Bangladesh

In April 2024, WaterAid submitted a [case study](#) on its project implemented with its local partner, Rupantor, to support climate-vulnerable communities in Shyamnagar, Satkhira District, Bangladesh, where rising sea levels and frequent cyclones exacerbate water scarcity. These communities lack piped water networks, forcing residents to risk drinking contaminated water or travel long distances for clean water, often leading to health issues like waterborne diseases and high sodium levels, causing pre-eclampsia in pregnant women.

To address this, WaterAid introduced the 'WE-WE' (Water Entrepreneurship for Women Empowerment) model, focusing on women's involvement in water supply and distribution to enhance climate resilience. Women formed management committees to oversee the construction and operation of reverse osmosis (RO) plants, which provide clean water by desalinating 500 litres per hour. This model allowed women to generate income, reducing dependency on male family members and alleviating the burden of fetching water - a burden which often fell on the shoulders of young girls, who were pulled out of school.

The project not only provided technical support and business training to the women, but also ensured that the RO plants served marginalized communities. Profits from water sales covered operational costs and were reinvested into the community, promoting sustainable water access and improving health outcomes.

Updates on the last meeting of the Expert Group on Non-Economic Losses

The 5th meeting of the NELs Expert Group took place on 23 May. The meeting focused on the status of the update of the NELs technical paper and the development of the technical guide on averting, minimizing and addressing non-economic losses in the context of human mobility. WIM ExCom members also shared information on the planned events at SB 60, and briefly introduced the plan for organizing a meeting of all expert groups of the WIM ExCom in conjunction with ExCom 21.

Technical Expert Group on Comprehensive Risk Management (TEG-CRM)

Compendium on Comprehensive Risk Management Approaches vol.2 (Activity 5 of the TEG-CRM 2nd [Plan of Action](#)) in progress

The second volume of the Compendium on Comprehensive Risk Management Approaches is being developed to showcase recent developments in applying comprehensive risk management for anticipating and responding to loss and damage at various levels of governance in developing countries. It will cover the spectrum of actions required for addressing and building long-term resilience to loss and damage from the impacts of climate change, including rapid onset events and slow-onset events covering (i) anticipatory action integrated into adaptation and disaster risk reduction, (ii) contingency measures, and (iii) short-, medium- and long-term response, rehabilitation and sustainable reconstruction. [Submissions](#) were received following a call for information on actions, measures and approaches that respond to loss and damage from the impacts of climate change.

Spotlight on: Supporting Comprehensive Resilience Building in the Chimanimani and Chipinge Districts of Zimbabwe

In February 2024, UNESCO submitted a [case study](#) on the impacts of Cyclone Idai in Zimbabwe's Chimanimani district, emphasizing the losses and damages caused by strong winds, heavy rain and severe flooding that led to loss of life and extensive destruction of homes, infrastructure and agricultural lands.

In response to the associated vulnerabilities, UNESCO initiated the "Comprehensive Resilience Building in the Chimanimani and Chipinge Districts" project in 2021. This project employed the Climate Risk Informed Decision Analysis (CRIDA) methodology to address water-related risks exacerbated by climate change. Through stakeholder engagement and workshops, flood and landslide hazards were mapped and critical infrastructure impacts were assessed to strengthen emergency response capacities and identify adaptation actions. By integrating CRIDA into water resource planning, the project developed a medium-to-long term vulnerability assessment and adaptation pathway for the district. This inclusive approach empowered stakeholders to prioritize locally led adaptation interventions that not only reduce disaster risk but also promote socioeconomic development and livelihoods.

The lessons learned from this project highlight the value of CRIDA in building resilience and guiding adaptation efforts in the face of climate change, providing valuable knowledge for other regions grappling with similar climate impacts.



Key Findings Related to Loss and Damage from the IPCC AR6 WGII Report on Impacts, Adaptation and Vulnerability (Activity 1 of the TEG-CRM 2nd [Plan of Action](#))

The WIM ExCom endorsed this knowledge product, published as part of the TEG-CRM Plan of Action. It summarizes findings on human aspects of loss and damage in the AR6, WG II report, with the aim of making available actionable information for national and regional policy-makers.

Making sense of climate information for comprehensive risk management (Activity 2 of the TEG-CRM 2nd [Plan of Action](#))

UNDRR, in collaboration with WMO, produced a [technical guideline](#) on the application of climate information for comprehensive risk management. Launched at COP 28, the guideline provides pathways for climate information that is scientifically sound and publicly available. Ultimately, by accessing the best available up-to-date climate information, planners, risk managers and decision-makers will be empowered to develop their strategies and plans, considering multiple climate-related hazards at different levels of uncertainty. More info at: <https://undrr.org/crm>.

Task Force on Displacement (TFD)

First draft of Technical Guide on Integrating Linkages between Human Mobility and Climate Change into National Climate Change Planning Processes (Activity 4 of the TFD [Plan of Action](#)) reviewed

The first draft of the [Technical Guide on Integrating Linkages between Human Mobility and Climate Change into National Climate Change Planning Processes](#), co-led by IOM, ILO and UNHCR, has been reviewed by the WIM ExCom. This step-by-step guide will provide concise and operational information to different levels of government entities and policy stakeholders, for mainstreaming human mobility considerations into national climate change planning processes, in particular the National Adaptation Plan. Focusing on social equity and justice, and those who are most vulnerable, this guide will provide operational and user-friendly information and tools on a broad range of human mobility dimensions. The publication of this guide is planned for 2024.

Outline of Technical guide on averting, minimizing and addressing non-economic losses in the context of human mobility (Activity 4 of the TFD [Plan of Action](#) and Activity 7 of the NELs expert group [Plan of Action](#)) endorsed

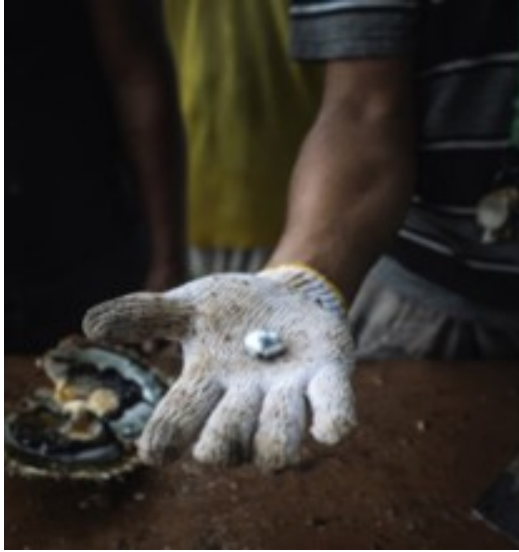
The outline of the [Technical Guide on averting, minimizing and addressing non-economic losses in the context of human mobility](#), was endorsed by the WIM ExCom. This guide is being developed jointly by TFD and NELs expert group. It will provide specific examples of non-economic impacts and responses in the context of human mobility, including impacts on indigenous or local knowledge, societal identity and cultural heritage.

Survey launched gathering inputs for [Technical Guide on Accessing Financial Resources Aiming to Avert, Minimize, and Address the Impacts of Displacement Associated with the Adverse Effects of Climate Change](#) (Activity 5 of the TFD [Plan of Action](#))

A [survey](#) has been launched to gather relevant information on how relevant activities and initiatives focusing on human mobility are currently being funded. The outcomes of this survey will inform a mapping of how different funding streams and instruments have been used to support work to avert, minimize and address loss and damage in the context of displacement and other forms of human mobility, and to highlight lessons learnt so far with regard to resources mobilized successfully for relevant projects and initiatives. Further inputs to the survey are welcomed.

Action and Support Expert Group (ASEG)

Membership review and Plan of Action coming



up

Following the decision at ExCom 20, WIM ExCom will review the membership and develop the second Plan of Action of the expert group, taking into consideration relevant decisions from CMA 5 and COP 28 and the evolving loss and damage landscape. ASEG supports strategic workstream (e) of the five-year workplan of the WIM ExCom, which focuses on action and support, including finance, technology and capacity-building to address loss and damage associated with the adverse effects of climate change.

Paper on case studies of projects funded by the Green Climate Fund (GCF) in relation to the strategic workstreams of the Warsaw International Mechanism (Activity 2 of the ASEG [Plan of Action](#)) endorsed

The WIM ExCom endorsed this knowledge product developed by ASEG at ExCom 20. The paper will be published in the coming days.

ANNOUNCEMENTS FROM EXPERT GROUPS MEMBERS

The members of the thematic expert groups of the WIM ExCom wish to share announcements of events to take place at SB 60, and information on ongoing related work that may contribute to the implementation of the plans of action.

Mandated and side events at SBs 60

- The Facilitative Working Group (FWG) of the Local Communities and Indigenous Peoples Platform (LCIPP) will be organizing the mandated LCIPP Annual Capacity Building Workshop: Transforming climate action through engaging Indigenous Peoples and local communities on 4 June 2024; 1 p.m. to 3 p.m. CET at AHH Lower Conference Room, UN Campus Bonn. Further information [here](#).
- UNDRR, CGAIR and the Global Green Growth Institute (GGGI), will host a side event entitled "Loss and damage data to accelerate climate action" on 8 June 2024 at 10:15 a.m. CET in the Bonn Room at World Conference Center. Further details [here](#).

Others

- The FWG welcomes submissions in diverse formats such as written case studies, short videos, photo narratives, and voice recordings through the [UNFCCC submission portal](#).
- LCIPP Resource Hub: Contribute to the platform by sharing any relevant resources you may have using the "Submit a resource" button on [LCIPP Resource Hub](#).
- The capacity building, entitled "Thought leadership course - Synergizing disaster risk reduction and climate change adaptation", developed by UNDRR and UNSSC, in the context of Activity 3 of the TEG-CRM [Plan of Action](#), is still open. More details [here](#).
- Building on the existing disaster loss accounting system, www.DesInventar.net, UNDRR is partnering with UNDP and WMO to develop a new tracking system for

hazardous events and losses and damages. To better understand data-related challenges, an [analysis of climate and disaster data gaps](#) was launched at COP28, while a framework for [assessing data and digital maturity](#) of countries was also developed to ensure that technical assistance is best-suited to each specific context. More information [here](#).

MAIN LINKS

[UNFCCC Loss and Damage webpage](#)

[WIM webpage](#)

[WIM ExCom page](#)

You would like to join our community of experts? Register to the WIM Roster of Experts[here](#).

Contact: loss-damage@unfccc.int

UNFCCC secretariat | UN Campus Platz der Vereinten Nationen 1 | Bonn, State/Province 53113 DE

[Unsubscribe](#) | [Update Profile](#) | [Constant Contact Data Notice](#)



Try email marketing for free today!