



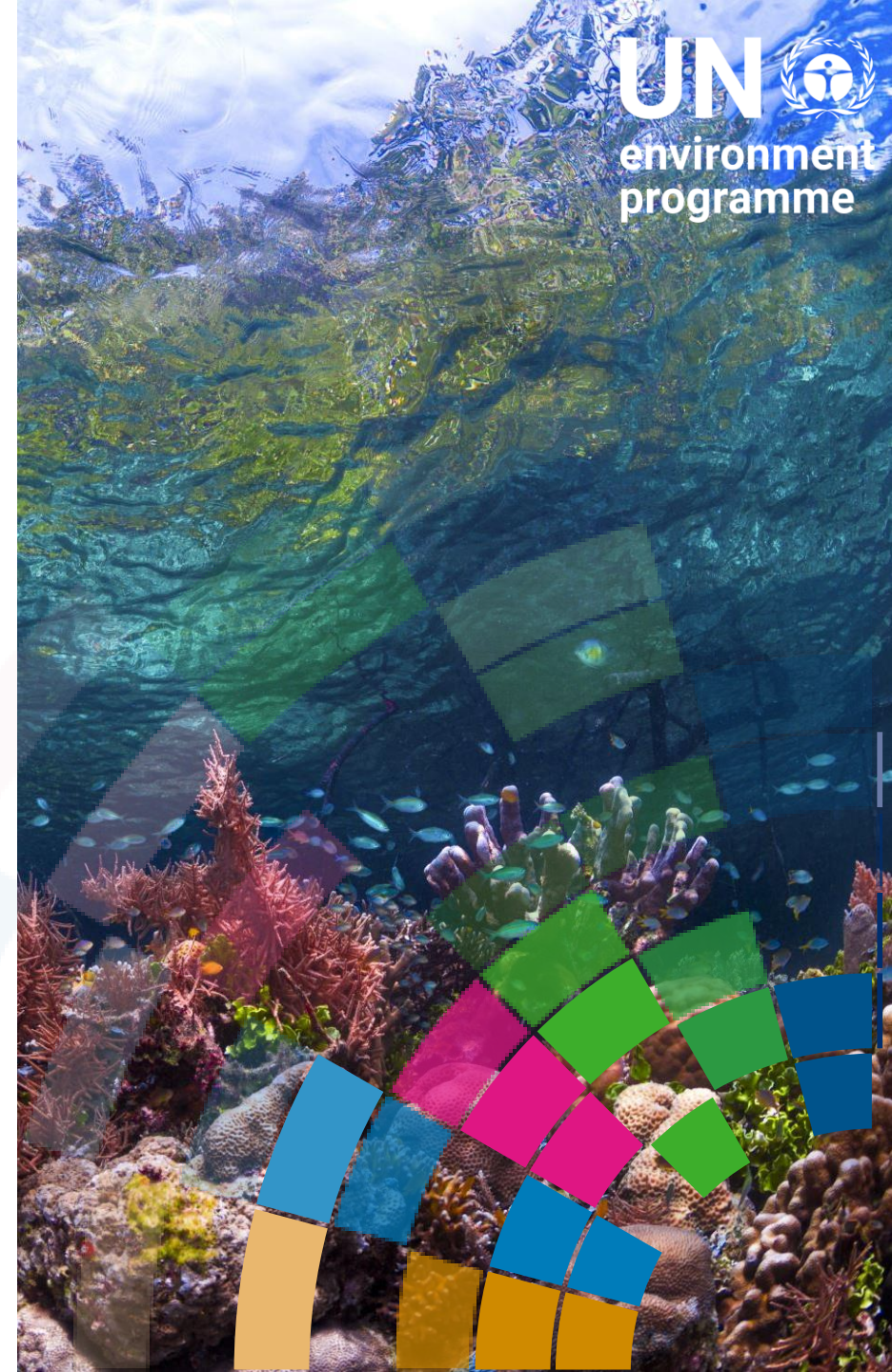
UNFCCC Subsidiary Body for Scientific and Technological Advice  
Ocean and Climate Change Dialogue 2024  
11- 12 June  
High-level Expert Panel Discussion

**Adapting to the accelerating impacts of climate change,  
restoring biodiversity, supporting livelihoods and maintaining  
ecosystem services through conservation measures**



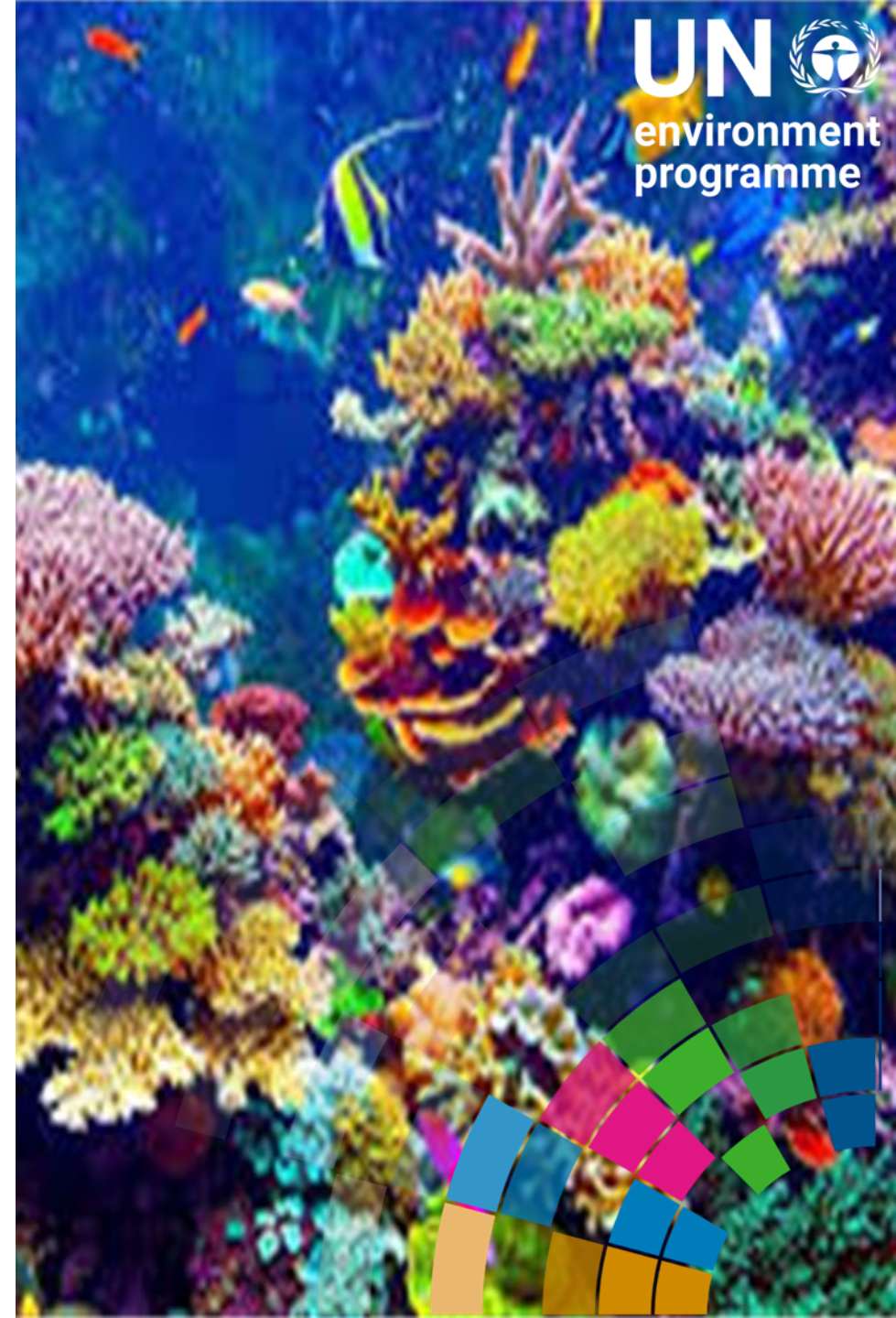
## Why Ocean?

- Ocean provides a wealth of resources and ecosystem services that are fundamental to maintaining life on earth
- The continuing decline of ocean health and the increasing impacts of climate change: [ocean warming](#), [SLR](#), [acidification](#), [deoxygenation](#)
- The ability of the ocean to provide vital ecosystem services declines
- To date, [only 29 million km<sup>2</sup> \(8%\)](#) of the ocean are documented under protected and conserved areas
- Ocean's central role in [regulating the planet's climate](#), cross-cutting contribution to the [achievement of SDG](#), [Paris Agreement](#), [GBF](#), [BBNJ agreement](#)
- Conservation, restoration and sustainable use of the ocean and the marine ecosystems is vital



## How do ecosystem conservation measures support resilience building?

- Area-based management tools and approaches such as [ICZM](#), [MSP](#), [SBE](#) and [MPAs](#) provide frameworks that promote coherent, multi-sectoral and participatory approaches to implement integrated ocean-based climate actions in NDC
- This makes a significant contribution to sustainable pathways by
- Accelerating rapid decarbonization of national, regional and global economies that promotes an ecosystem-based approach to the conservation of ocean resources
- The GST encouraged the use of [ocean-based climate actions](#) including [ecosystem-based adaptation \(EbA\)](#) and [nature-based solutions \(NbS\)](#), for climate mitigation, adaptation and resilience building



# Strategies to enhance coastal resilience

## 1. Integrated coastal zone management (ICZM)

- Recognizes the interconnectedness of coastal ecosystems and the need for an integrated holistic management approach
- Coastal zones are complex environments including beaches, wetlands, estuaries and coral reefs
- Interacts with diverse human/economic activities
- Ensures policies are well-informed and reflective of the diverse needs and challenges faced by coastal areas

## 2. Restoration and conservation of natural buffers such as mangroves, coral reefs and wetlands

- These ecosystems serve as the critical frontline defense against extreme events



- The GST findings emphasise the importance of NbS in conserving the ecosystems to enhance climate adaptation and mitigation actions
- Decade of Ecosystem Restoration will play a critical role

### 3. Adaptive management and early warning systems

- The GST underscores the dynamic nature of climate impacts, necessitating flexible and responsive approaches
- Adaptive management allows for the **regular assessment and adjustment of policies and practices** based on emerging data and changing events
- Programs that integrate **traditional ecological knowledge** with modern science can foster innovative solutions and strengthen wider stakeholder engagement

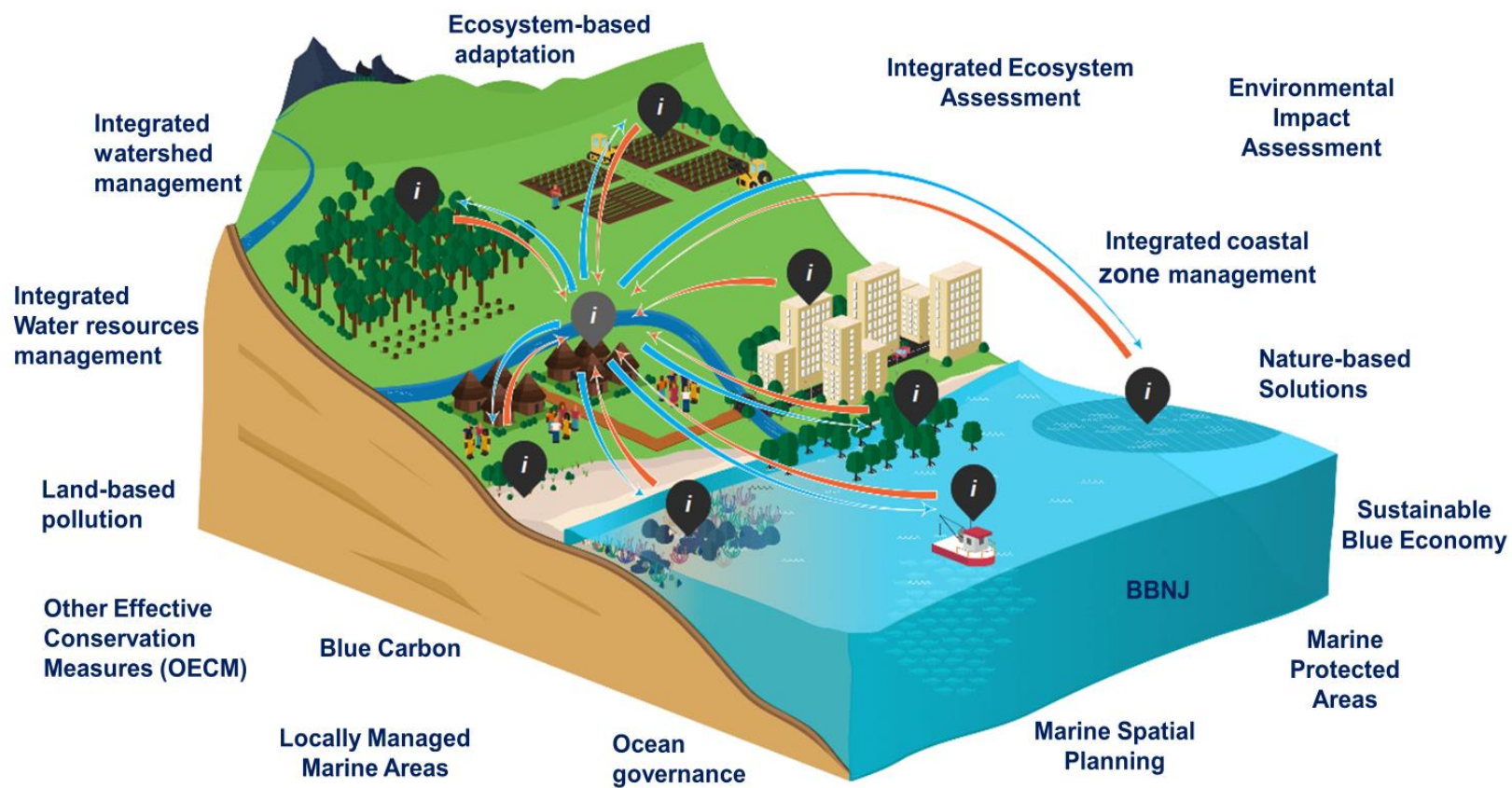


#### 4. Fostering international cooperation and financing mechanisms

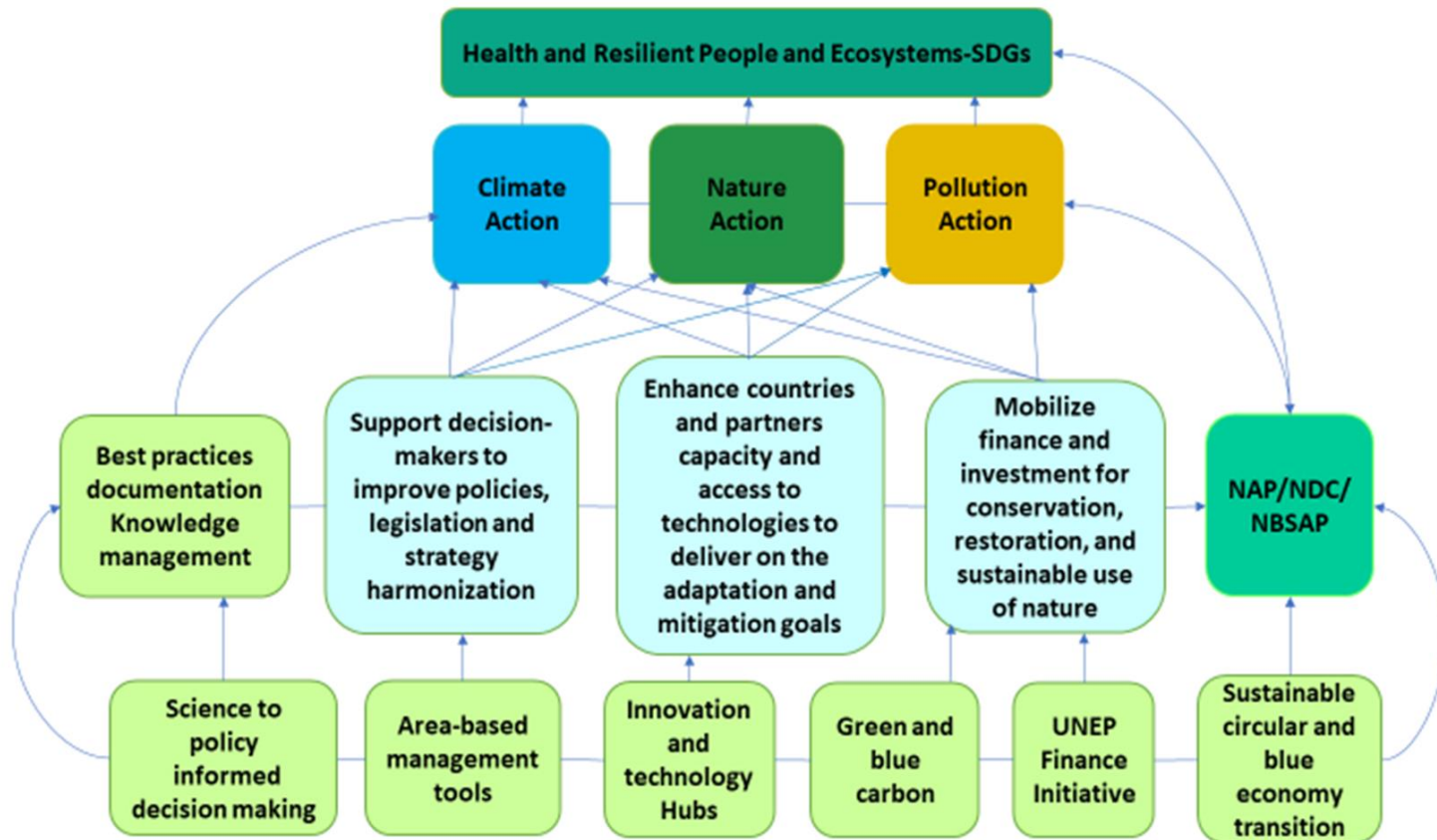
- The GST highlights the need for enhanced global collaboration to support vulnerable regions
- We must stimulate public and private green and blue finance: triple investment in nature-based solutions by 2030
- Our ambitions for nature need to be matched with nature-positive investment from domestic and international, public and private sources
- The Green Climate Fund and the Adaptation Fund
- SBE offers remarkable potential:
  - ✓ goods and services from the ocean generate **\$2.5 trillion** annually
  - ✓ providing **more than 60%** of the economic value of the global biosphere
  - ✓ contributing **over 31 million** direct full-time jobs



## 5. Integrating and connecting concepts, systems and actions...



# How does UNEP contribute to this global effort?



Thank you

