

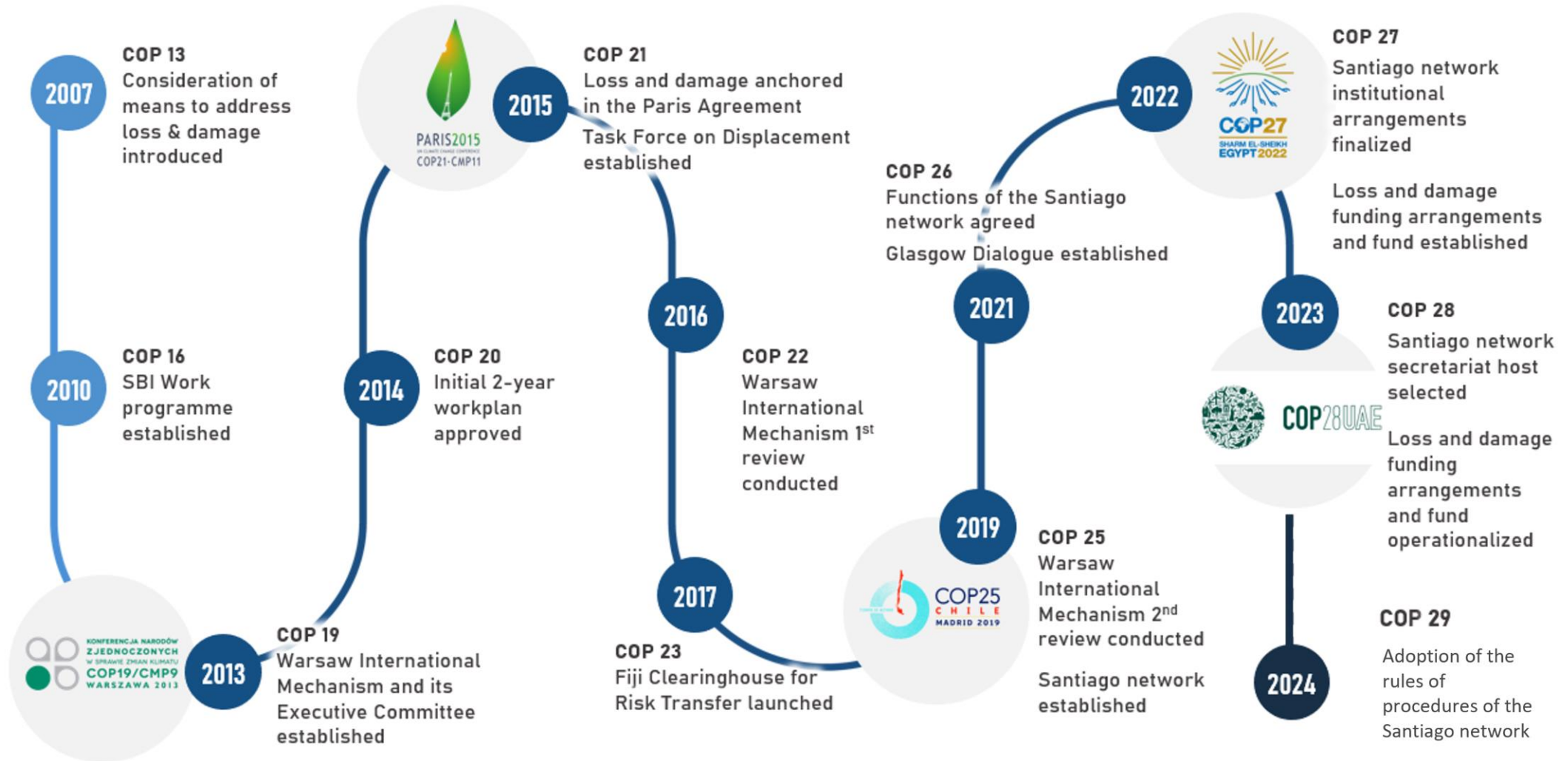
The Warsaw International Mechanism for  
**LOSS AND DAMAGE**  
Executive Committee



**United Nations**  
Climate Change

Executive Committee  
introduction package, 11 May 2025

---



# Chronology of Loss and Damage evolution under the UNFCCC



# WIM: Functions and institutional arrangements

## Warsaw International Mechanism for Loss and Damage

### Executive Committee

Expert Group on **Slow onset events**

Expert Group on **Non-economic losses**

Technical Expert Group on **Comprehensive risk management**

Task Force on **Displacement**

Expert Group on **Action and Support**

### Santiago network

**Advisory Board**

**Members** (organizations, bodies, networks, experts)

**Santiago network Secretariat**

## Three functions of the WIM



1. Enhancing knowledge and understanding of comprehensive risk management approaches.



2. Strengthening dialogue, coordination, coherence and synergies among relevant stakeholders.



3. Enhancing action and support, including, finance, technology and capacity-building.



# WIM: Executive Committee (ExCom)



The Executive Committee (ExCom), established at COP 19, is mandated to guide the implementation of the functions of the WIM.



The ExCom comprises 20 [members](#):

10 members from Annex I Parties;

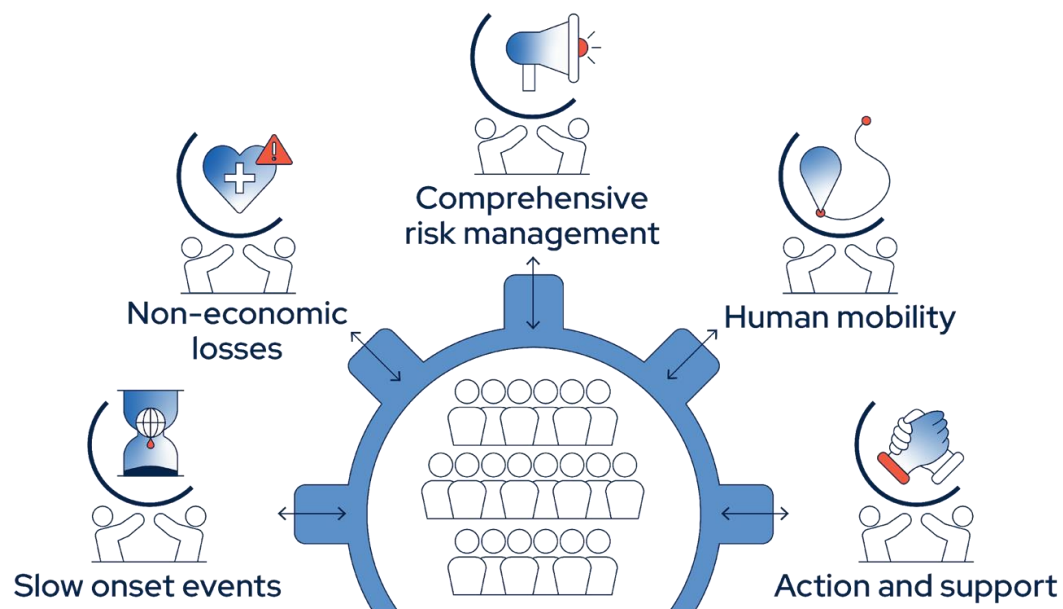
10 members from non-Annex I Parties:

- 2 members each from Africa, Asia-Pacific, and Latin American and the Caribbean;
- 1 member from Small Island Developing States (SIDS);
- 1 member from the Least Developed Countries (LDCs);
- 2 additional members from non-Annex I Parties.

# ExCom's current five-year rolling workplan (2023–2027)

16 activities under the five workstreams below, covering:

- Increasing awareness on topics related to the five workstreams and outreach
- Developing databases and methodologies
- Collecting good practices and amplifying across regions
- Developing knowledge products and technical guides
- Building partnerships with external stakeholders



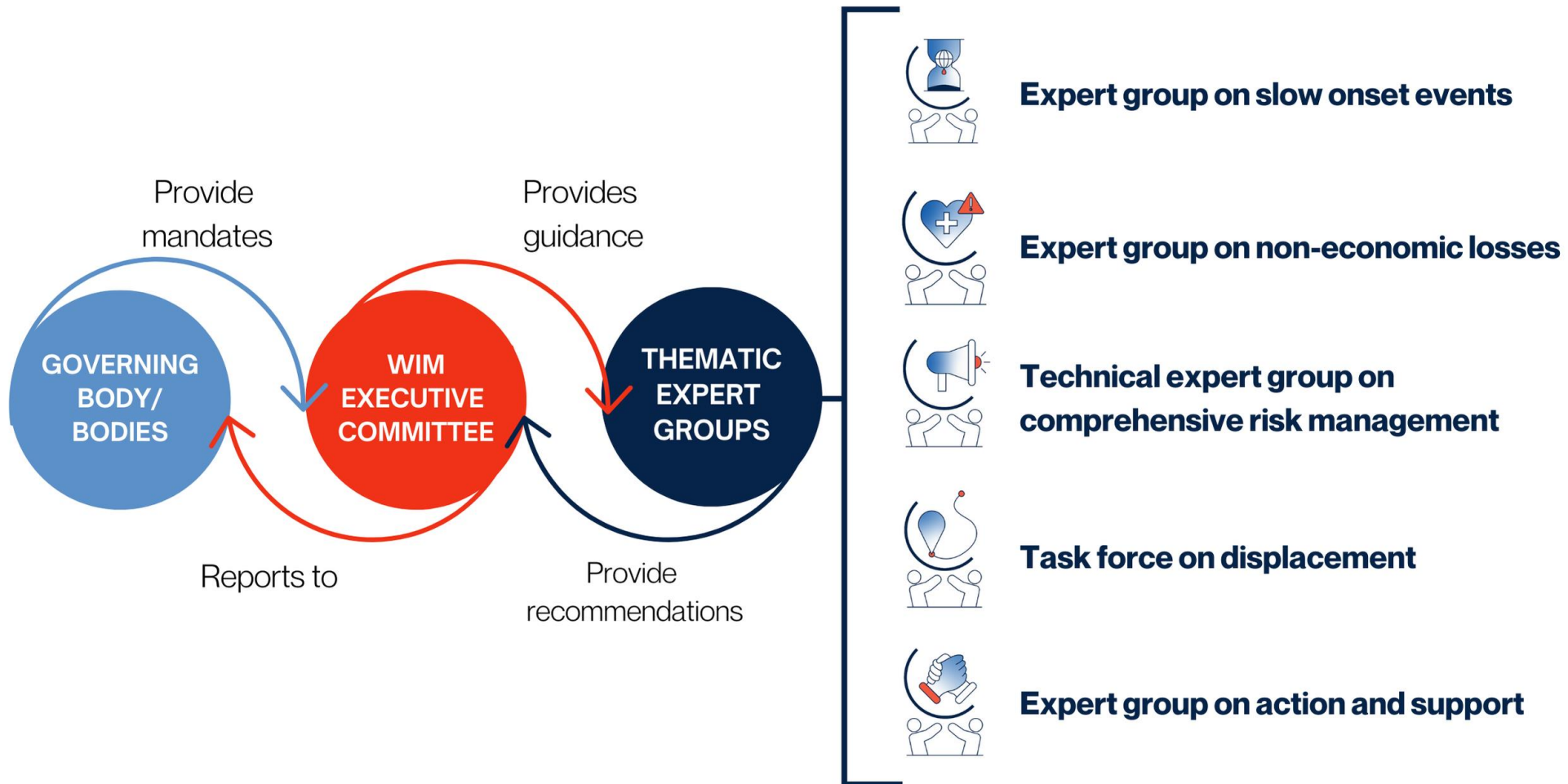
20 cross-cutting activities:

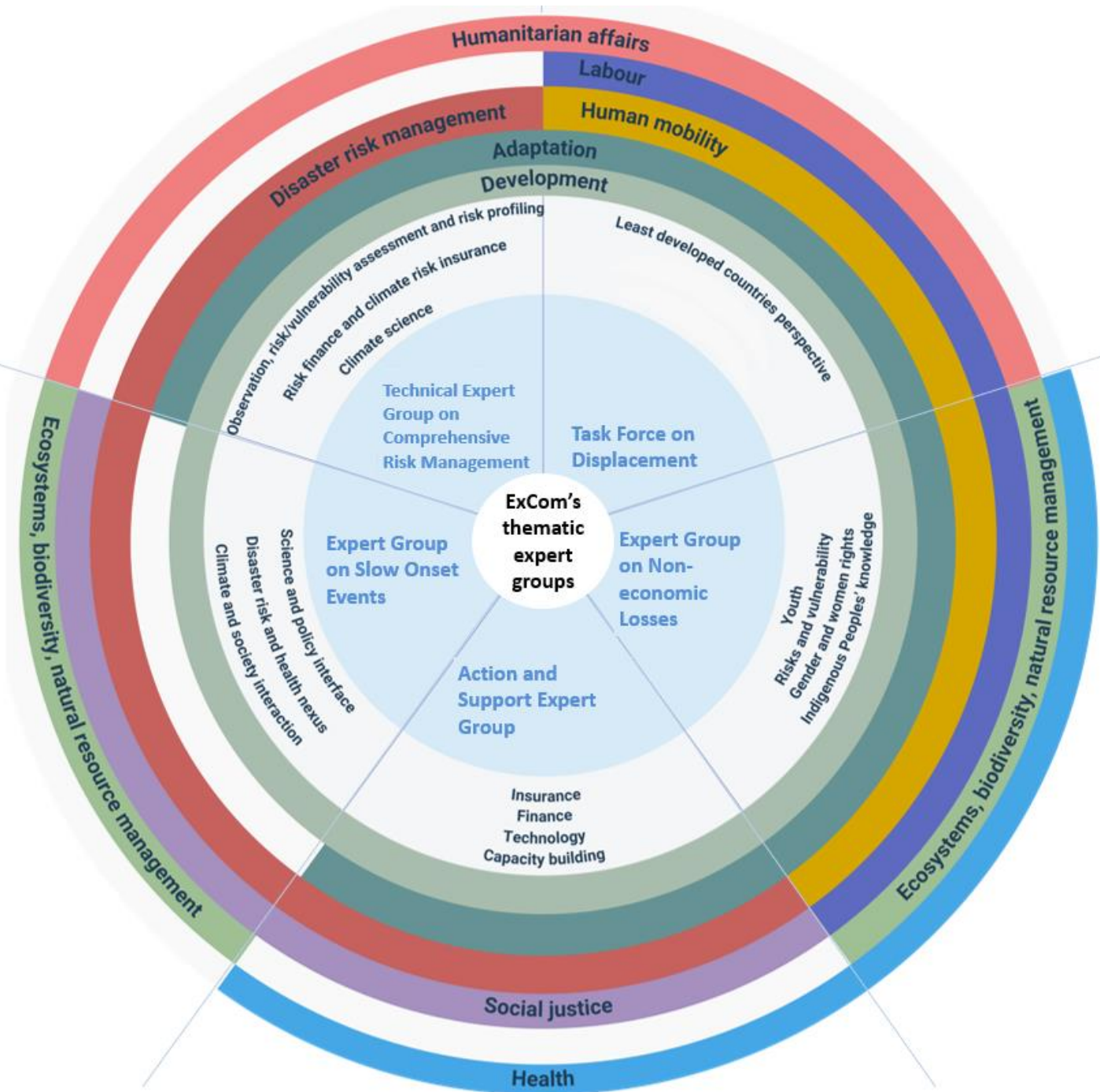
- Engaging those that are at the forefront of climate change
- Developing tools and methodologies related to loss and damage
- Collaborating with constituted bodies, and operating entities of the Financial Mechanism
- Promoting synergies and collaboration with relevant organizations, processes, agendas and frameworks
- Developing and disseminating knowledge products and related capacity building
- Communicating and fostering public education

See the full details of the ExCom rolling workplan 2023–27



# WIM: ExCom's thematic expert groups





The Warsaw International Mechanism for  
**LOSS AND DAMAGE**  
 Executive Committee

# Range of expertise convened through the five thematic expert groups

# Expert group on slow onset events: **Plan of Action** **and outputs**



The focus of the current [plan of action](#) (2024–2026) is to:

- Produce three technical guides on the selected water-related slow onset events to showcase approaches for responding to these events, taking into account regional particularities, traditional knowledge and local practices:
  - ✓ [Sea level rise](#) – published in Feb 2025
  - ✓ Glacial retreat and desertification – in the pipeline. See the [teaser](#)
- Increasing awareness and sharing information on slow onset events at the global, regional and national levels, via outreach materials, webinars and events



# Expert group on non-economic losses: Plan of Action



## INDIVIDUALS



Life



Health



Human mobility

## SOCIETY



Territory



Cultural Heritage



Indigenous knowledge



Societal/cultural identity

## ENVIRONMENT



Ecosystem services



Biodiversity

The focus of the 1<sup>st</sup> [rolling plan of action](#) (2021–2024):

- Stocktaking relevant data, tools and knowledge on non-economic losses.
- Awareness-raising, outreach and support strategy.
- Enhancing technical guidance and catalyzing support.
- Developing recommendations for the Executive Committee for consideration by Parties.
- New plan of action (Sep 2025 –) to be developed and included in the 2025 reporting for COP 30/CMA.7



# Expert group on non-economic losses: **Outputs**



- Technical publications:
  - A [technical paper](#) on non-economic losses, featuring loss of territory and habitability, ecosystem services and biodiversity, and cultural heritage (tangible and intangible), published in November 2024, informed by [various approaches submitted](#) by countries and organizations in February 2024, covering diverse aspects of:
    - Integrating key non-economic losses considerations in policies and planning, immediate or early response efforts, long-term resilience efforts for irreversible non-economic losses, and
    - Engaging those that are at the forefront of climate change.
  - Technical guide on averting, minimizing and addressing non-economic losses in the context of human mobility in the pipeline to be published for COP 30. See [teaser](#) Expert consultations held in September 2024.
- Databases:
  - An [inventory](#) of information sources related to averting, minimizing and addressing non-economic losses, based on information collected via a call for submissions in April 2023.
  - An [online database](#) of organizations that expressed interest in working with the expert group.



# Technical Expert Group on Comprehensive Risk Management: **2<sup>nd</sup> Plan of Action**



The 2<sup>nd</sup> [plan of action](#) (2022–2024) broadly covered:



Risk-informed planning, implementation and solutions.



Climate risk assessment and services.



Humanitarian perspective on climate risk.



Social protection.



Climate and disaster impact monitoring.

[Compendium on comprehensive risk management approaches vol.2](#), published in February 2025, covering pre-emptive action, contingency arrangements, managing impacts, transformative action and governance. It also provides information on how risk management tools can be used to address certain forms of loss and damage that are aligned with the climate-related representative key risks identified in IPCC reports.

The development of the Compendium was informed by recent [case studies](#) submitted, covering actions, measures and approaches that respond to loss and damage from the impacts of climate change.



# Technical Expert Group on Comprehensive Risk Management: Further outputs

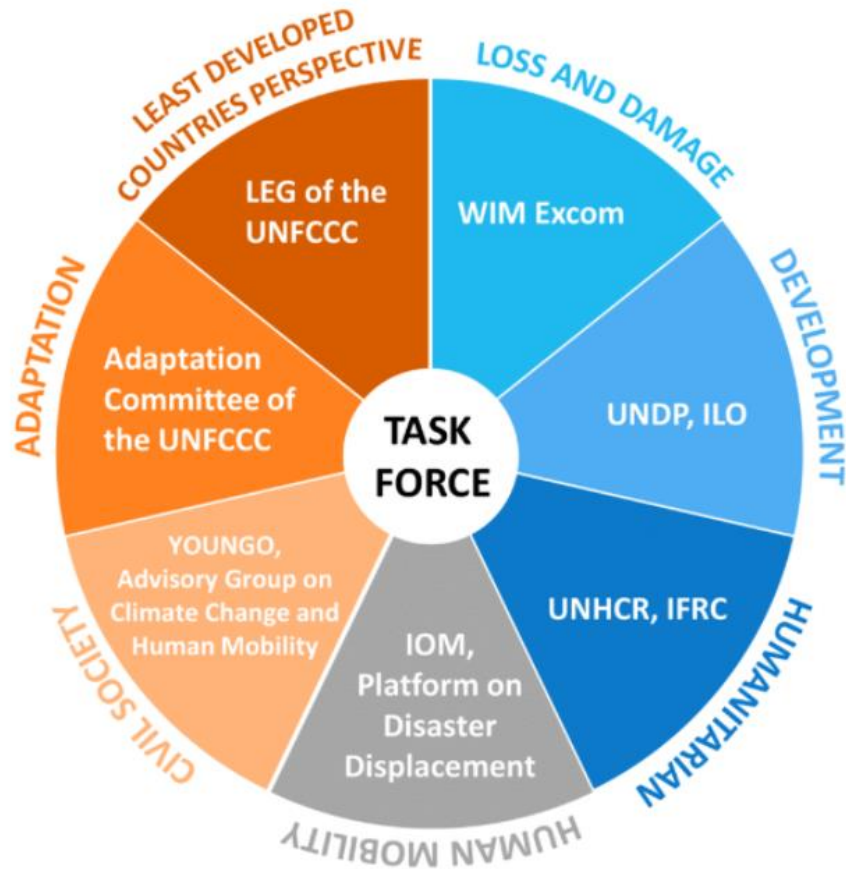


Examples of further outputs catalyzed under its 2<sup>nd</sup> plan of action (2022-2024)

- Three publications by individual members of the TEG-CRM:
  - [“Key Findings Related to Loss and Damage from the IPCC AR6 WGII Report on Impacts, Adaptation and Vulnerability”](#).
  - [“Addressing Loss and Damage: What can we Learn from Countries’ National Adaptation Plans?”](#).
  - [“The Role of Early Warning Early Action in Minimizing Loss and Damage”](#).
- Other outputs by the TEG-CRM members’ organizations:
  - [“Technical guidance on application of climate information for comprehensive risk management”](#) and a thought leadership course on “Synergizing Disaster Risk Reduction and Climate Change Adaptation”.



# Task Force on Displacement: 3<sup>rd</sup> Plan of Action



The 3<sup>rd</sup> [Plan of Action](#) (2022–2024) focuses on:

- Fostering a shared understanding of approaches to averting, minimizing and addressing displacement associated with climate change impacts.
- Supporting Parties with practical user-friendly tools for implementing the recommendations.

Recent technical product published in November 2024

- ✓ [Technical guide](#) on integrating human mobility and climate change linkages into relevant national climate change planning processes providing operational information and tools. Designed as a step-by-step resource, the guide outlines key steps for mainstreaming human mobility into NAPs and can be adapted and applied to specific contexts and institutional needs.



# Task Force on Displacement: **further outputs**



Examples of further outputs under its 3<sup>rd</sup> Plan of Action (2022-2024)

- Technical guide on averting, minimizing and addressing non-economic losses in the context of human mobility, under development jointly with the expert group on non-economic losses. See [teaser](#).
- Technical guide on accessing finance to avert, minimize, and address the impacts of displacement associated with the adverse effects of climate change, to be published by COP 30. See [teaser](#).
- [Technical session](#) on integrating human mobility considerations into NAPs held at the 2024 NAP Expo, Contribution to events at the Human mobility pavilion at COP 28.



# Action and Support Expert group



The [Action and Support Expert group](#) focuses on aspects relating to finance, technology and capacity-building to address loss and damage. The 1<sup>st</sup> [Plan of Action](#) focused on:

- Clarifying how developing country Parties may access funding from the GCF for loss and damage
- Information on available sources of support for loss and damage
- Assisting ExCom's collaboration with relevant bodies and organizations under and outside the Convention and the Paris Agreement, such as the Standing Committee on Finance, GCF, GEF

Recent publication

[An analysis Paper](#) on case studies of projects funded by the Green Climate Fund (GCF) in relation to the strategic workstreams of the Warsaw International Mechanism, published in November 2024





# Technical guide on integrating human mobility and climate change linkages into relevant national climate change processes

This Technical Guide provides stakeholders with operational information and tools to incorporate the topic of human mobility related challenges and opportunities into relevant national climate change planning processes, in particular, the NAP process. It also serves as a supplement to the UNFCCC National Adaptation Plans: Technical Guidelines produced by the Least Developed Countries Expert Group.

Designed as a step-by-step resource, the guide outlines key steps for mainstreaming human mobility into NAPs and the entry points and approaches can adapted and applied to specific contexts and institutional needs. It aims to aid countries in developing inclusive and effective policy responses that protect those affected by internal displacement, cross-border displacement, the movement of pastoralists and transhumance, labour migration, and planned permanent relocations.

FIGURE 3.1: STRUCTURE AND TYPES OF ACTION OF THIS TECHNICAL GUIDE

	ELEMENT A Laying groundwork and addressing gaps	ELEMENT B Preparatory elements	ELEMENT C Implementation strategies	ELEMENT D Reporting, monitoring, and review	
Actions for mainstreaming human mobility in the context of climate change	Information collection	4.1.1 Activity 1: List of stakeholders (template)	4.2.4 Activity 1: Synthesizing knowledge on sectoral human mobility challenges (description and templates)	4.3.2 Action point 1: Identify relevant local stakeholders (short description)	
		4.1.2 Activity 1: Stocktaking of human mobility and adaptation (template)			
	4.1.2 Activity 2: Situation analysis of human mobility dimensions (template)				
	Stakeholder engagement	4.1.1 Activity 2: Initial briefings and awareness-raising sessions (short description)	4.2.3 Action point 2: Include human mobility experts in the review of the NAP (short description)	4.3.2 Action point 2: Raise awareness about human mobility among local stakeholders (short description)	4.4.2 Action point 1: Include relevant stakeholders in the development and review of CBT indicators
		4.1.1 Activity 3: Bilateral briefings for senior officials (short description, example)	4.2.4 Action point 1: Conduct initial briefings for sectoral focal points (short description)	4.3.3 Activity 1: Briefing for regional actors (short description, example)	4.4.3 Action point 1: Include relevant experts for mainstreaming human mobility into the next NAP
			4.2.4 Action point 2: Include relevant stakeholders in sectoral task forces (short description)	4.3.3 Activity 2: Taking points for promoting coordination and synergy (short description, example)	4.4.3 Action point 2: Consider contributions from migrants for the development of the next NAP
Generating evidence	4.1.2 Activity 3: Policy Mapping and Analysis (short description)	4.2.1 Action point 1: Include human mobility types in climate risk assessments and hazard mapping (template)		4.4.4 Action point 1: Include relevant government entities in the stakeholder outreach strategy	
		4.2.1 Action point 2: Include human mobility types in vulnerability and adaptation assessments (template)		4.4.4 Action point 2: Familiarize broad range of experts with the NAP during stakeholder outreach strategy	
		4.2.1 Activity 1: (Case) studies to assess key aspects of the human mobility and adaptation nexus (description with examples)		4.4.4 Action point 3: Engage with relevant experts for the stakeholder outreach strategy	
Capacity building		4.2.4 Action point 3: Include human mobility in research of sectoral risks, vulnerabilities, adaptation options (description)		4.4.4 Action point 5: Participate in events at national, regional, and global levels, to share experience	
	4.1.3 Activity 1: Training on human mobility in the context of climate change nexus (short description, resources, and links)		4.3.1 Activity 1: Training on human mobility in the context of climate change (short description)	4.4.4 Action point 4: include human mobility in school curricula and awareness-raising on climate change adaptation (short description)	
Planning, reviewing, revising			4.3.2 Action point 4: Develop capacities of local stakeholders for addressing human mobility-related challenges and opportunities (short description)		
		4.2.2 Activity 1: Identifying the priority issues (planning sheets)	4.3.2 Action point 3: include human mobility in local adaptation plans (short description)	4.4.1 Activity 1: A Results Framework for Mainstreaming Human Mobility into the NAP (description and template)	
		4.2.3 Action point 1: Include all relevant aspects of human mobility in the drafting of the NAP (description and examples)		4.4.2 Action point 2: Consider voluntary contributions from migrants through awareness raising, financial incentives, technical assistance (short description)	

Dark: templates and questionnaires | Medium: step-by-step descriptions and links to resources or extensive examples | Light: short descriptions

Slow onset events | Non-economic losses | Comprehensive risk management | Human mobility | Action and support

Publication date: November 2024.

## Acknowledgements

This technical guide was prepared under the third rolling plan of action of the **Task Force on Displacement** of the Executive Committee of the Warsaw International Mechanism for Loss and Damage and co-led by expert members of the Task Force: the International Organisation for Migration represented by Soumyadeep Banerjee, Harald Sterly, Manuel Marques Pereira, Sinziana Puscas and Tmnit Nur, the United Nations Office of the High Commissioner of Refugees represented by Michelle Yonetani and the International Labour Organisation represented by Paul Tacon as well as Lorenzo Guadagno.

The Warsaw International Mechanism for **LOSS AND DAMAGE** Executive Committee



Full report



ExCom page



# Case studies of Projects funded by the Green Climate Fund in relation to the strategic workstreams of the Warsaw International Mechanism for Loss and Damage



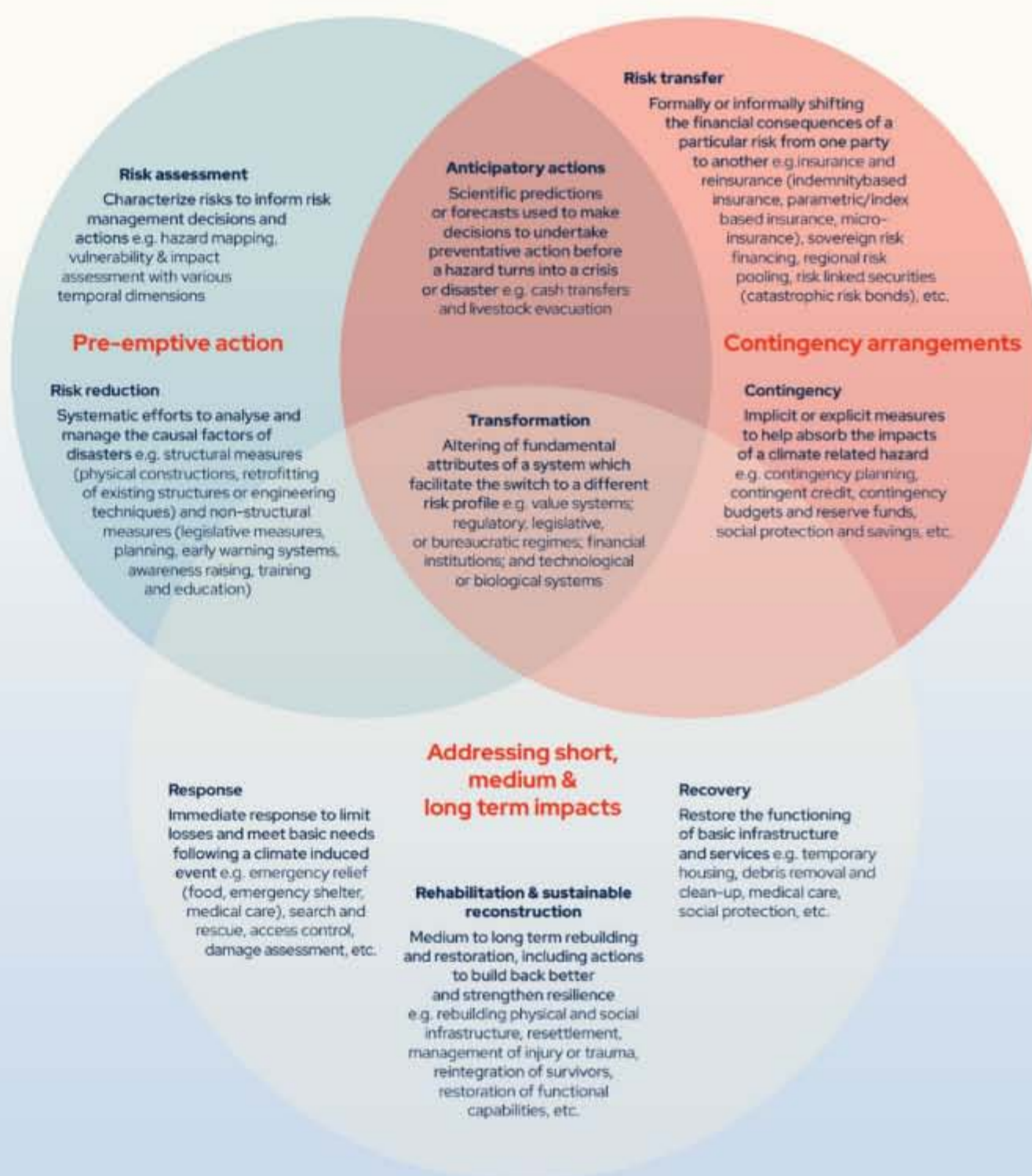
This report analyzes approved Green Climate Fund (GCF) adaptation projects to highlight the range of activities that the GCF supports for responding to loss and damage associated with climate change impacts.

Projects were selected across the WIM ExCom strategic workstreams to enhance cooperation and facilitation in five main areas: slow onset events, non-economic losses, comprehensive risk management, human mobility, and action and support. A comprehensive risk management perspective was applied to identify GCF-funded actions in the context of loss and damage.

The primary actions funded were pre-emptive measures like risk assessment and risk reduction. Some projects included anticipatory actions like forecast-based finance and early action protocols, while contingent arrangements (e.g. insurance) were typically co-financed with governments. No projects funded ex-post actions for immediate post-disaster response, but some supported medium- to long-term rehabilitation and reconstruction.

Detailed case studies outline climate hazards and vulnerabilities addressed, objectives and interventions undertaken, loss and damage considered, and financial instruments used.

Figure 2: Collection of indicative actions along comprehensive risk management in the context of loss and damage



Source: Developed from the frameworks presented in (MCIJ & GIZ, 2019; Nassef, 2020; Qi et al., 2023; Scottish Government, 2022; UNFCCC, 2023e, 2023g)

- Slow onset events
- Non-economic losses
- Comprehensive risk management
- Human mobility
- Action and support

Publication date: November 2024.

## Acknowledgements

This report was developed under the plan of action of the **Action and Support Expert Group** of the Executive Committee of the Warsaw International Mechanism for Loss and Damage.

The Warsaw International Mechanism for **LOSS AND DAMAGE** Executive Committee



Full report



ExCom page



# Technical paper on Non-economic losses: featuring loss of territory and habitability, ecosystem services and biodiversity, and cultural heritage



This paper explores non-economic losses related to biodiversity and ecosystem services, territory and habitability, and cultural heritage and their overlapping impacts on socio-ecological systems.

The paper first explains how biodiversity and ecosystem services losses impact livelihoods, security, health, dignity, and identity. It describes responses like livelihood diversification, community training, and nature-based solutions, emphasizing the need for better integrating losses into policy and improved monitoring and community engagement.

It then discusses how loss of territory and habitability affects well-being, cultural practices, and social cohesion and outlines three response types: humanitarian relief, landscape rehabilitation and protection, and planned relocation. It stresses the need for equitable finance, inclusive decision-making, awareness raising, and stronger land tenure security in responding to these losses.

The paper finally describes the different forms of loss of cultural heritage, such as the loss of identity, traditional governance, and community resilience. It outlines a range of responses to these losses, from recognizing and integrating cultural heritage into policies to building capacity to strengthen cultural resilience.

Table 2: Some examples of nature-based measures used for protecting against loss of land or restoring habitability

 <p><b>HARD STRUCTURES</b></p>	<ul style="list-style-type: none"> <li>In the Netherlands, sea dykes and revetments are used to protect coastlines from flooding and erosion and support coastal protection defences for sand dunes.</li> <li>Sea walls have been implemented in communities on Vanua Levu Island, Fiji, to safeguard communities against coastal pressures, although they are proving ineffective.</li> <li>Anti-salt dykes in Senegal have been used to reclaim land for rice cultivation.</li> <li>In Bhutan and Nepal, risks of glacial outbursts have been reduced through artificial lake management systems that drain water through siphon pipes, outlet channels, controlling breaching or pumping, and river stabilization through gabion revetment and bioengineering.</li> </ul>
 <p><b>NATURE-BASED SOLUTIONS</b></p>	<ul style="list-style-type: none"> <li>In Kiribati, a type of natural fence known as the bulbui, made with branches and trunks and held together with sand coir, is built on the shore as a barrier against the wind and seawater, while also trapping sediment.</li> <li>Mangrove planting in lagoons has been used in Funafuti, Tuvalu, to address saline intrusion and prevent further erosion, while also providing opportunities for aquaculture activities.</li> <li>Communities in Mali and Niger whose landscapes were transformed by land degradation have been undertaking composting and fertilizing techniques to increase soil fertility, assisted natural regeneration and rehabilitation of degraded land through bio and mechanical techniques.</li> <li>For atoll areas, NbS for reefs, lagoons and land have been identified to address the challenge of habitability. This includes: (1) coral reef protection and restoration (e.g. through outplanting on reefs or assisting coral recruitment) which can reduce the risk of extreme events by dissipating wave energy and contributing to the production of sediments for shoreline protection; (2) mangrove planting or protection to facilitate sedimentation that raises the level of land at pace with sea level rise, mitigates wave damage from storms and prevents erosion and saline intrusion where conditions are suitable; (3) marine-based aquaculture infrastructure in lagoons such as long-line culture of shellfish and seaweeds that can attenuate wave energy to assist coastal armoring as a mitigation solution to coastal hazards; and, (4) the protection, enhancement and restoration of littoral vegetation to enhance sediment accretion, attenuate wave energy and increase soil cohesion to reduce erosion.</li> </ul>
 <p><b>HYBRID SOLUTIONS</b></p>	<ul style="list-style-type: none"> <li>In Bangladesh, communities have developed a combination of embankments by planting vetiver grass and trees while also constructing village defence walls and dykes to protect against sea level rise and coastal erosion.</li> <li>In New South Wales, Australia, a seawall coastal defence is complemented by establishing vegetation (e.g. mangroves and seagrass or artificial or shellfish reef) directly in front of them, and preserving landward vegetation to manage wave energy, tidal flooding and storm surge.</li> <li>For coastal communities such as those in the Nile Delta, groynes and breakwaters, and NbS such as reed fencing and clay core dykes are being used for beach restoration, encouraging the development of sand dunes and reducing flood impacts.</li> </ul>

Sources: Barnett et al., 2022; Cauchi et al., 2021; United Nations Economic and Social Commission for Western Asia, 2024; Feagin et al., 2015; Ferrario et al., 2014; Harris et al., 2018; Nepal and Bhutan submission, 2023; Mikaelian, 2022; Morris et al., 2018; Piggott-McKellar et al., 2020; Siegel, 2019; UNCDF, 2024.

Slow onset events | Non-economic losses | Comprehensive risk management | Human mobility | Action and support

Publication date: November 2024.

## Acknowledgements

This paper was developed under the rolling plan of action of the **Expert Group on Non-Economic Losses** of the Executive Committee of the Warsaw International Mechanism for Loss and Damage and co-led by expert members of the group: Ms. Yvonne Walz, Ms. Karen McNamara, and UNESCO, represented by Ms. Jyoti Hosagrahar and Mr. Nigel Crawhall.

The Warsaw International Mechanism for  
**LOSS AND DAMAGE**  
Executive Committee



Full report



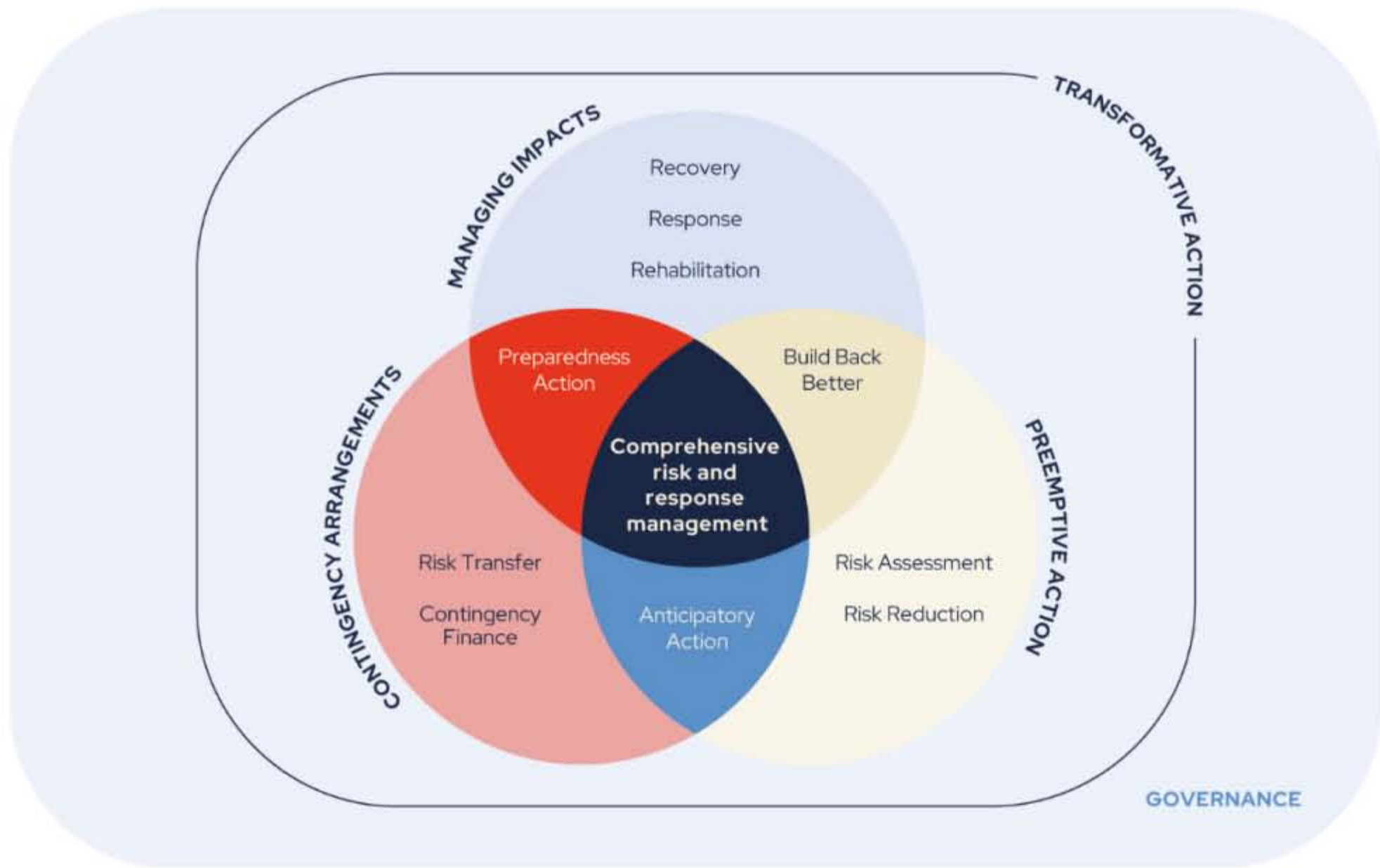
ExCom page



# Compendium on comprehensive risk management approaches – volume 2

The Compendium on Comprehensive Risk Management Approaches - Volume 2 provides policymakers with a framework for integrating risk-informed decision-making into loss and damage measures.

The categories of actions in the comprehensive risk and response management framework



Source: Adapted from UNFCCC (2024), IPCC (2022b) and MCII (2018).

The second volume of the Compendium describes the main components of the comprehensive risk management framework – pre-emptive action, contingency arrangements, managing impacts, transformative action, and governance – while linking specific risk management tools within the framework to “loss and damage signatures” which align with IPCC climate-related representative key risks. Featured case studies illustrate resilience-building against droughts, floods, and rising sea levels.

Slow onset events	Non-economic losses	<b>Comprehensive risk management</b>	Human mobility	Action and support
-------------------	---------------------	--------------------------------------	----------------	--------------------

Publication date: February 2025.

## Acknowledgements

The Compendium on Comprehensive Risk Management Approaches - Volume 2 was developed under the second plan of action of the **Technical Expert Group on Comprehensive Risk Management** of the Executive Committee of the Warsaw International Mechanism for Loss and Damage and led by an expert member of the group: the Munich Climate Insurance Initiative.

The Warsaw International Mechanism for  
**LOSS AND DAMAGE**  
Executive Committee



Full report



ExCom page



# Technical guide on sea level rise

This technical guide serves as a resource to enhance understanding of the multifaceted challenges of sea level rise and to aid policymakers and practitioners in managing its impacts and anticipating related risks.

**TABLE 1: LIST OF THE MAIN IMPACTS OF, AND SOLUTIONS FOR, SEA LEVEL RISE**

MAIN IMPACTS	MAIN TYPES OF LOSS AND DAMAGE	SOLUTIONS BY TYPE		
		Protect	Accomodate	Retreat
<ul style="list-style-type: none"> <li>• Coastal inundation</li> <li>• Coastline erosion</li> <li>• Saltwater intrusion, soil and water degradation</li> <li>• Permanent land submergence</li> <li>• Human displacement</li> <li>• Change/loss of mangrove/wetlands/sandy ecosystems</li> </ul>	<ul style="list-style-type: none"> <li>• Damage to buildings and infrastructure</li> <li>• Public health risks</li> <li>• Displacement, migration and statelessness</li> <li>• Disruption of local economies and loss of livelihoods</li> <li>• Damage and loss of cultural heritage and natural capital/ecosystem services</li> <li>• Wider systemic risks through supply chains and interdependencies, with wide economic and social impact</li> </ul>	<ul style="list-style-type: none"> <li>• Seawalls, polders and breakwaters</li> <li>• Hard-engineered coastal technologies, barriers and flood gates</li> </ul>	<ul style="list-style-type: none"> <li>• Hazard-proof infrastructure</li> <li>• Structural elevation</li> <li>• Land-use zoning</li> <li>• Livelihood diversification</li> <li>• Nature-based adaptation and ecosystem restoration</li> <li>• Social and financial protection</li> </ul>	<ul style="list-style-type: none"> <li>• Planned relocation</li> <li>• Coastal retreat and resettlement</li> </ul>

It starts by introducing the science of sea level rise before providing a detailed framework for understanding its drivers and impacts, including risk assessment methodologies at the global level. It then features a range of approaches for responding to loss and damage associated with sea level rise, categorized into protective measures, accommodative strategies, and managed retreat solutions.

It presents a range of solutions for each category, such as coastal armoring, social protection instruments, and strategic relocation. Supported by regional case studies, the guide emphasizes scientific knowledge, Indigenous practices, and innovative technologies to respond to the risks of sea level rise while highlighting resource mobilization, policy tools, and monitoring systems for the effective implementation of approaches.

Slow onset events    Non-economic losses    Comprehensive risk management    Human mobility    Action and support

Publication date: February 2025.

## Acknowledgements

This technical guide was developed under the second Plan of Action of the **Expert Group on Slow Onset Events** of the Executive Committee of the Warsaw International Mechanism for Loss and Damage (WIM ExCom) and co-led by expert members of the group: Mr. Jaroslav Mysiak, Ms. Mariya Aleksandrova, Mr. Albert Salamanca, and Mr. Akhilesh Surjan, with contributions from Ms. Elisa Calliari, member of the WIM ExCom.

The Warsaw International Mechanism for  
**LOSS AND DAMAGE**  
Executive Committee



Full report



ExCom page

# Range of expertise convened under the Executive Committee of the Warsaw International Mechanism for Loss and Damage

Established at COP 19, the Executive Committee of the Warsaw International Mechanism for Loss and Damage guides the implementation of the following functions of the Mechanism:

- Enhancing knowledge and understanding of comprehensive risk management approaches;
- Strengthening dialogue, coordination, coherence and synergies among relevant stakeholders;
- Enhancing action and support, including, finance, technology and capacity-building for addressing loss and damage associated with climate change impacts.

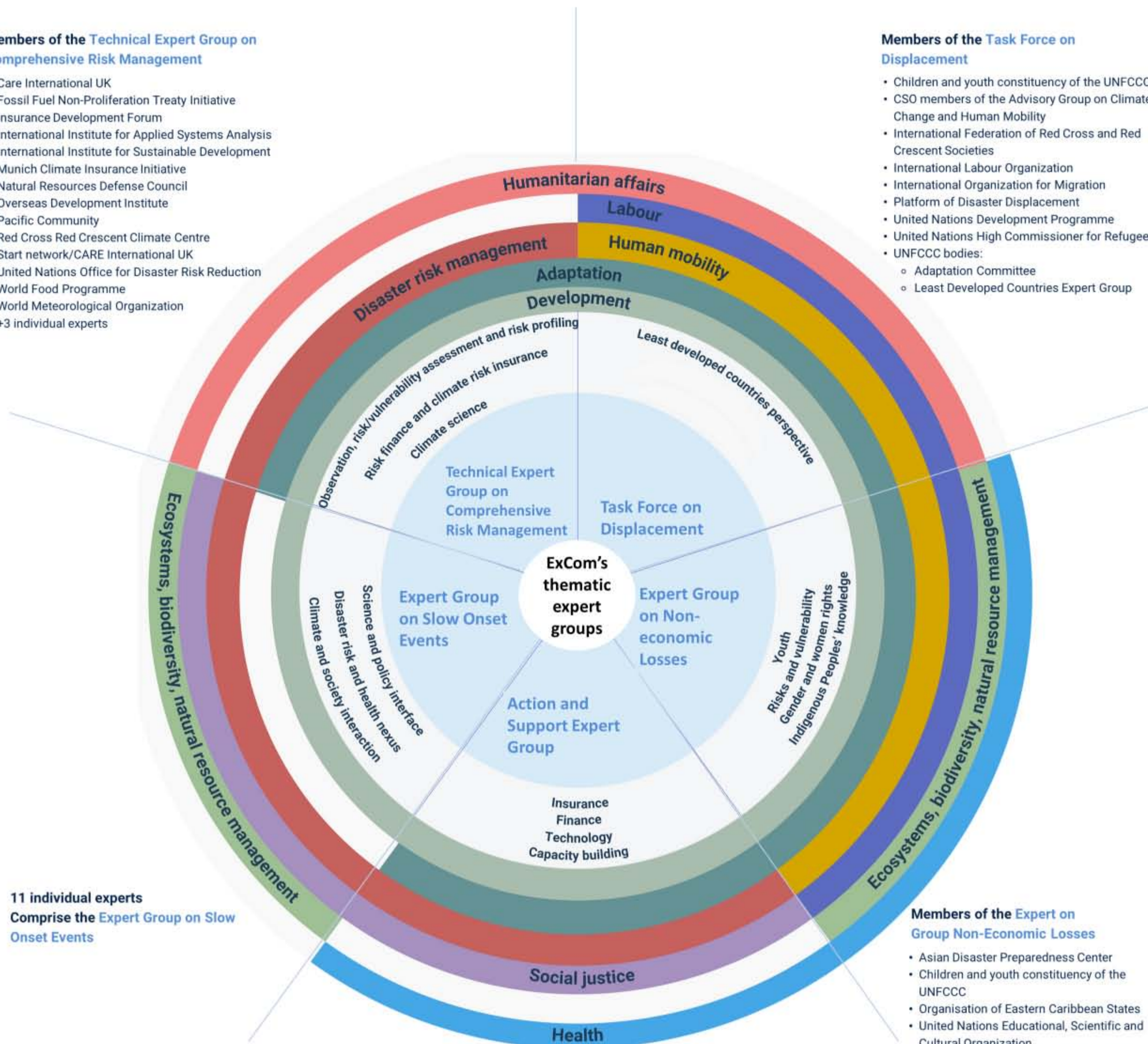
The Executive Committee undertakes its work with the contribution of the five thematic expert groups and through collaboration with various stakeholders.

## Members of the Technical Expert Group on Comprehensive Risk Management

- Care International UK
- Fossil Fuel Non-Proliferation Treaty Initiative
- Insurance Development Forum
- International Institute for Applied Systems Analysis
- International Institute for Sustainable Development
- Munich Climate Insurance Initiative
- Natural Resources Defense Council
- Overseas Development Institute
- Pacific Community
- Red Cross Red Crescent Climate Centre
- Start network/CARE International UK
- United Nations Office for Disaster Risk Reduction
- World Food Programme
- World Meteorological Organization
- +3 individual experts

## Members of the Task Force on Displacement

- Children and youth constituency of the UNFCCC
- CSO members of the Advisory Group on Climate Change and Human Mobility
- International Federation of Red Cross and Red Crescent Societies
- International Labour Organization
- International Organization for Migration
- Platform of Disaster Displacement
- United Nations Development Programme
- United Nations High Commissioner for Refugees
- UNFCCC bodies:
  - Adaptation Committee
  - Least Developed Countries Expert Group



11 individual experts  
Comprise the Expert Group on Slow Onset Events

## Members of the Expert on Group Non-Economic Losses

- Asian Disaster Preparedness Center
- Children and youth constituency of the UNFCCC
- Organisation of Eastern Caribbean States
- United Nations Educational, Scientific and Cultural Organization
- United Nations Entity for Gender Equality and the Empowerment of Women
- West African Science Service Centre on Climate Change and Adapted Land Use
- WWF International
- UNFCCC bodies:
  - Adaptation Committee
  - Facilitative Working Group of the Local Communities and Indigenous Peoples Platform
  - Least Developed Countries Expert Group
- +5 individual experts

## Members of the Action and Support Expert Group

- African Risk Capacity Insurance Company Limited
- Caribbean Catastrophe Risk Insurance Facility
- Caribbean Community Climate Change Centre
- Environnement et Développement du Tiers-Monde
- Organisation for Economic Co-operation and Development
- World Bank
- UNFCCC bodies:
  - Climate Technology Centre and Network
  - Paris Committee on Capacity-building
  - Standing Committee on Finance
  - Technology Executive Committee
- +1 individual expert



WIM ExCom  
Expert Groups



Register in the  
WIM Roster of  
Experts

# Technical products in the pipeline

- Technical guide on desertification (with the Expert group on slow onset event)
- Technical guide on glacial retreat (with the Expert group on slow onset event)
- Technical guide on averting, minimizing and addressing non-economic losses in the context human mobility (with the Expert group on non-economic losses and the Task Force on Displacement)
- Technical guide on accessing finance for averting, minimizing, and addressing the impacts of displacement associated with climate change impacts (with the Task Force on Displacement)
- Tbc: Biennial Global Research Update on Non-Economic Losses (with the Expert group on non-economic losses)
- Tbc: technical guide on cultural heritage (with the Expert group on non-economic losses)
- Tbc: technical products by the Technical Expert Group on Comprehensive risk management

## Useful links

- [Warsaw International Mechanism for Loss and Damage webpage](#)
- [Executive Committee webpage](#)
- [Annual reports](#)
- [Workshops and meetings](#)
- [Knowledge products published by the Executive Committee](#)

UNFCCC ExCom page

