



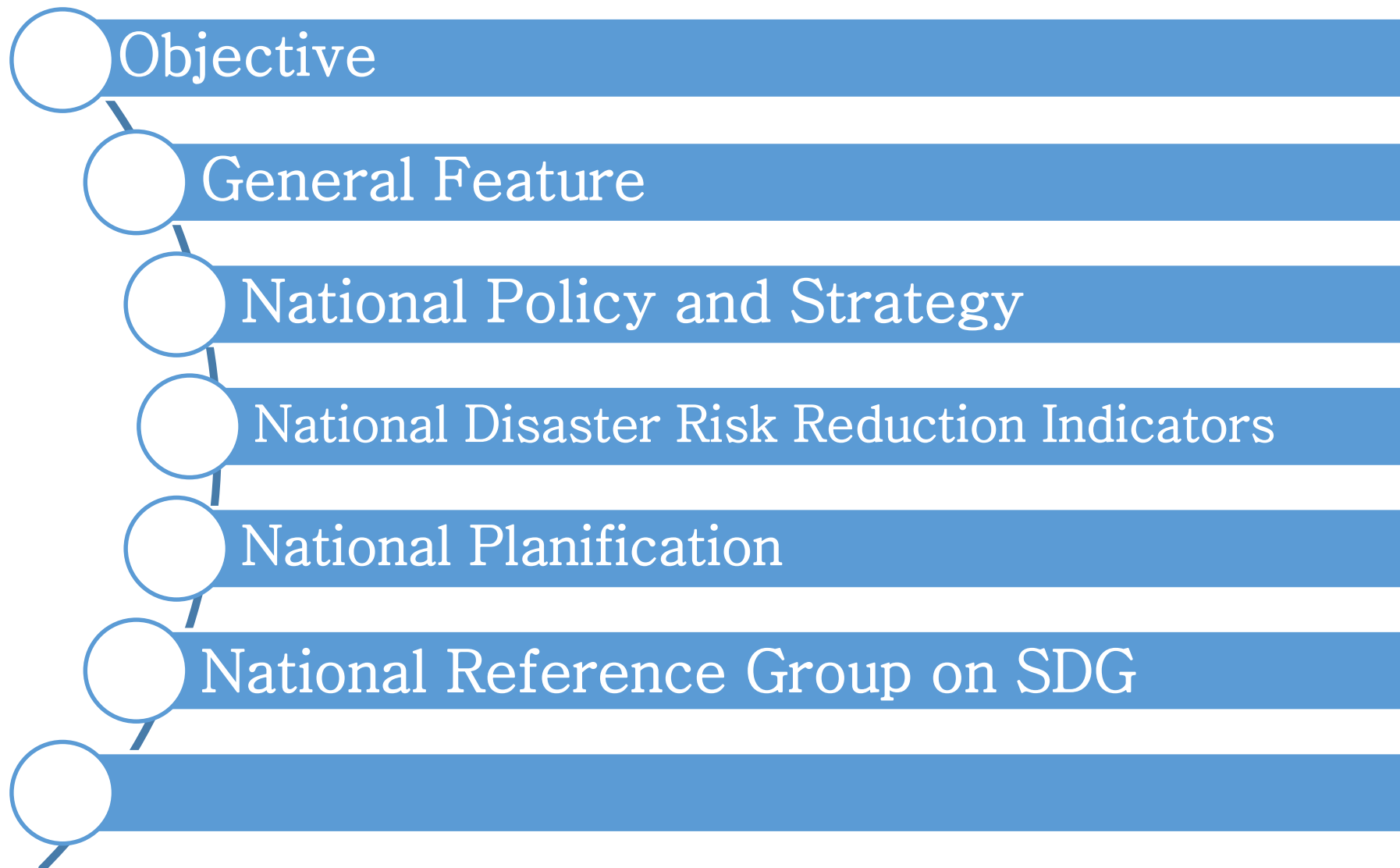
REPÚBLICA DE MOÇAMBIQUE
MINISTÉRIO DA ADMINISTRAÇÃO ESTATAL E FUNÇÃO PÚBLICA
INSTITUTO NACIONAL DE GESTÃO DE CALAMIDADES



INTEGRATING ADAPTATION, SDG AND SENDAI FRAMEWORK INDICATORS

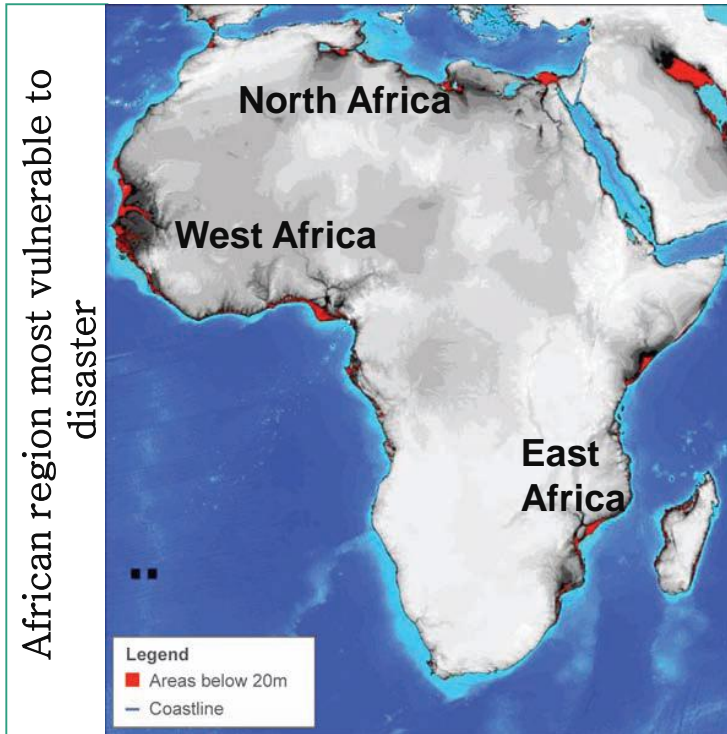


Teresa Custodio Pinto
Sendai Framework Focal Point
National Institute of Disaster Management – Mozambique
Tokyo, Japan, 24th July of 2018

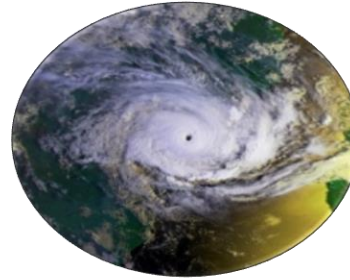


Share Mozambique's experience on aligning national policies and strategies with SDG and Sendai Framework

Africa



Mozambique



Cyclones



Floods



Droughts



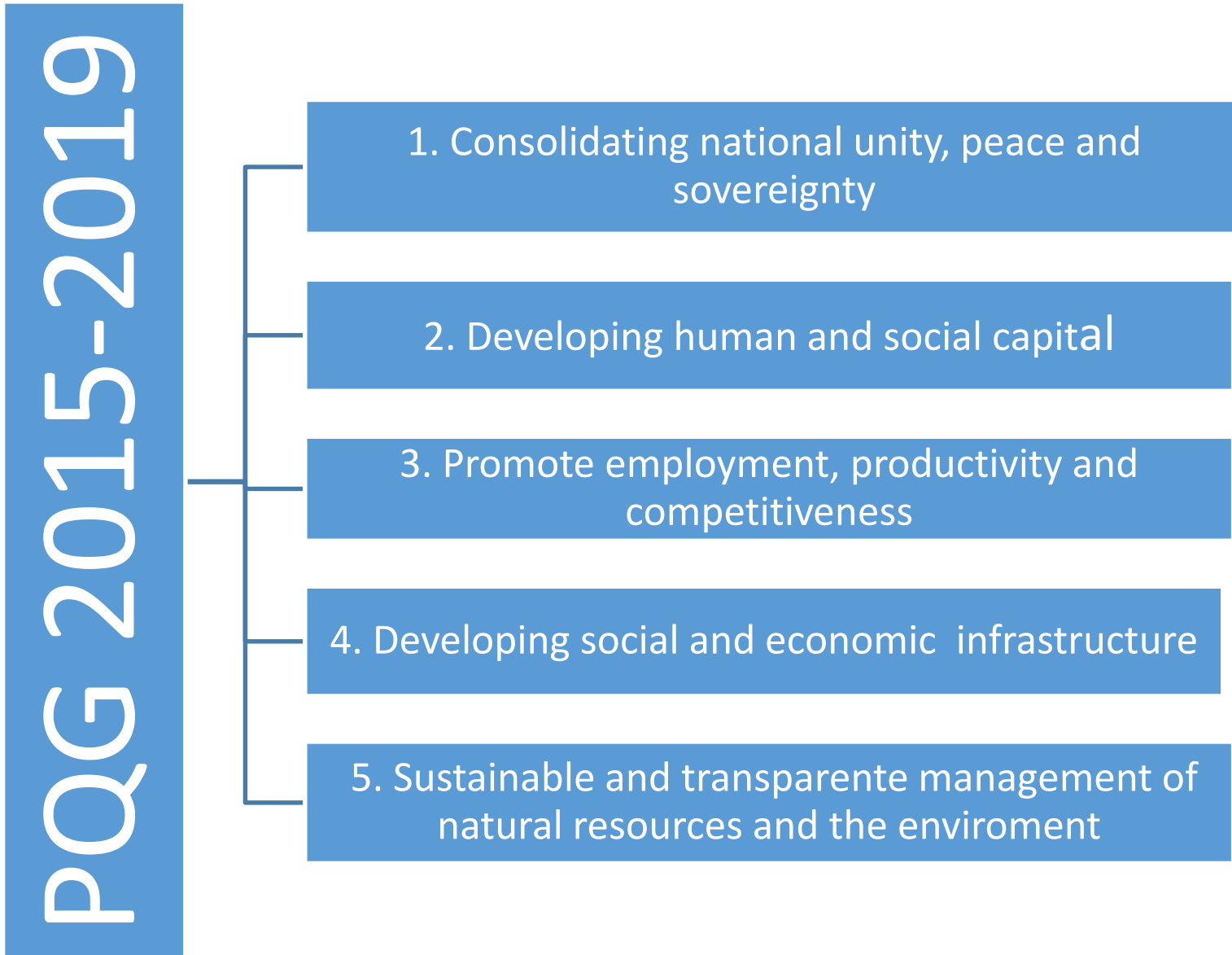
Earthquake



Epidemic



- Mozambique is a country prone to disaster. The country suffers, on average, 1.17 disaster of magnitude per year and is seen as being in one of the three regions most exposed to natural disasters in Africa.
- Disaster vulnerability results from its location at the mouth of nine international rivers, the long extension of the national territory located in the intertropical convergence, the extensive coastal zone suffers from tropical cyclones, and the existence of areas of seismic activity.
- The Government of Mozambique defined the Disaster Risk Management (DRR) as one of the national priorities. Since 2000 Mozambique adopted a proactive DRR approach to reduce exposed of local communities, economy and infrastructure, to extreme events caused by the cyclical occurrence of both natural and of human action



Master Plan for Disaster Risk Reduction 2017-2030

Reduce the risk of disasters, the loss of human lives and vital infrastructure, as well as prevent the emergence of new risks of disasters

1. Improve Understanding of
Disaster Risk at all levels

2. Strengthen Governance and Public
and Private Participation in Disaster
Risk Reduction

3. Consolidate the
processes of Public
Investment, Territorial
Planning and Financial
Protection against
disaster

4. Strengthen the
capacities of Alertness,
Response, Rapid
Recovery and Resilient
Reconstruction

5. Establish partnerships
and international
cooperation

National Climate Change Adaptation and Mitigation Strategy

2013-2025

Reduce CC vulnerability and improve the wellbeing of Mozambicans through the implementation of concrete measures for adaptation and climate risk reduction, mitigation and low-carbon development, aiming at sustainable development, with the active participation of all stakeholders in the social, environmental and economic sectors.

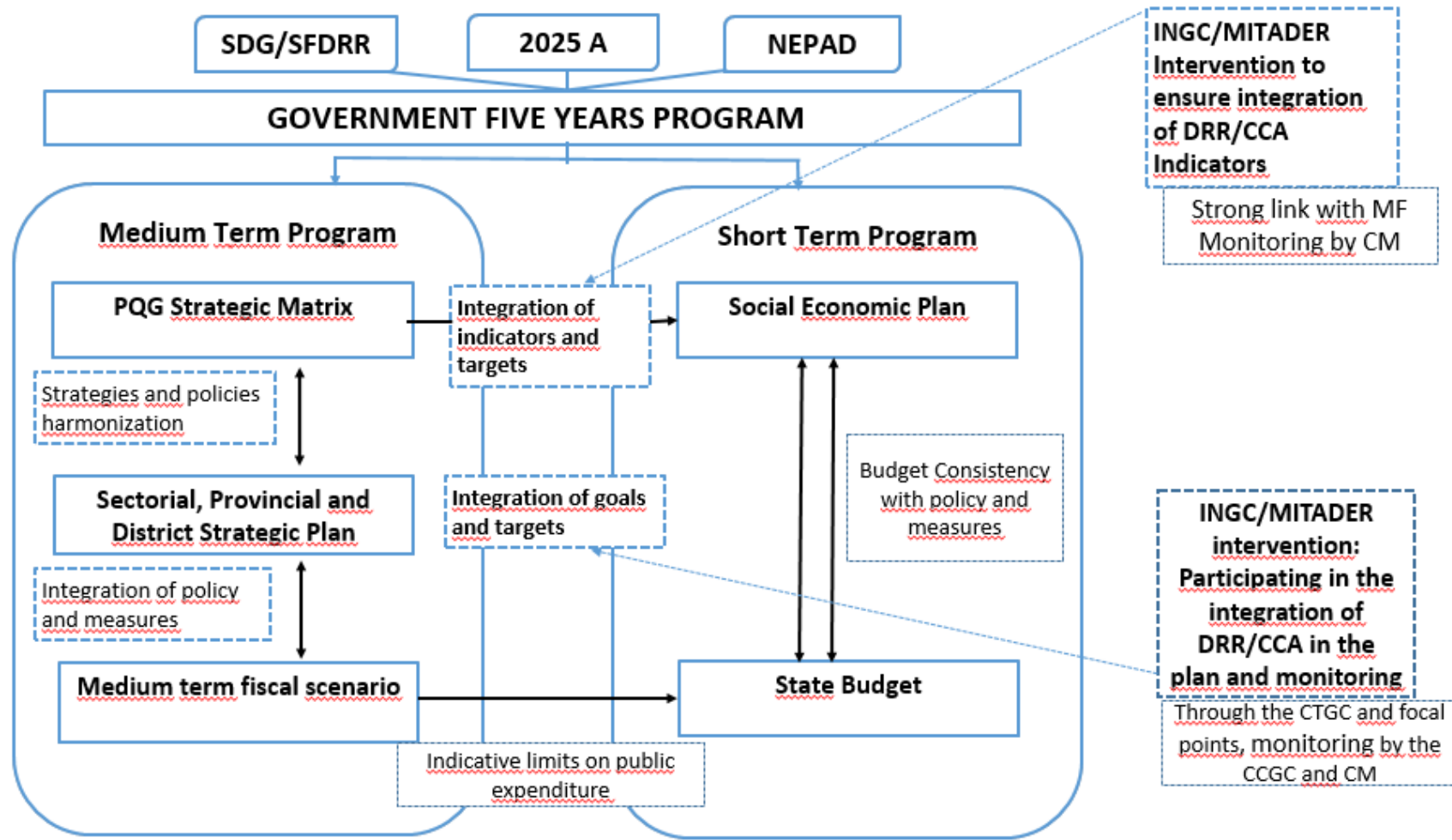
1. Mozambique becomes resilient to the impacts of CC, reducing to a minimum the climate risks to people and property, restoring and ensuring the rational use and the protection of the natural and physical capital

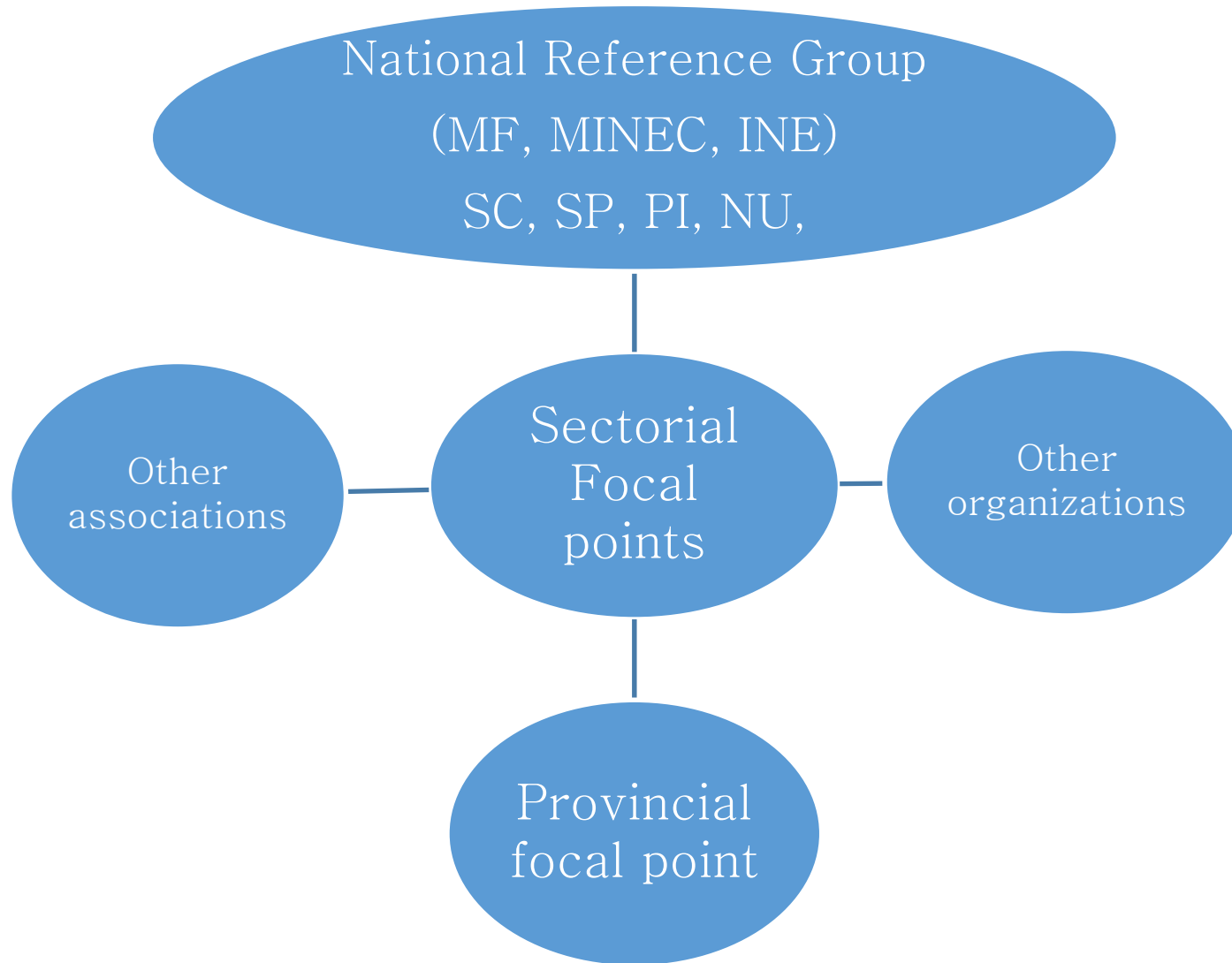
2. Identify and make use of the opportunities to reduce GHG emissions that simultaneously contribute to the sustainable use of the natural and the access to financial and technological resources at affordable prices and the reduction of the pollution and the environmental degradation promoting a low carbon development

4. build the institutional and human capacity as well as explore opportunities to access to technological and financial resources to implement the NCCAMS

IMPACT INDICATORS	
1. % household clusters living in absolute poverty by head of household, woman and man	SDG, African Strategies
2. GDP per capita in MT	SDG, African Strategie
3. Inequality Coefficient of the GINI	SDG, African Strategie, PQG, Agenda 2025
4. annual percentage of persons in the condition of food insecurity on the basis of total food population	SDG, PQG, ENAMMC, PDRRD,SFDRR, PEDSA
5. Number of affected people, injured, dead, displaced, resettled due to disasters per 100,000 people	SDG, PQG, ENAMMC, PDRRD, SFDRR, African Strategy
6.% of animals lost due to disasters depending on the total number of animals and,% of agricultural area lost due to disasters depending on the total area under cultivation	PQG, ENAMMC, PDRRD, SFDRR
7.% of schools and health units damaged due to disasters due to the total existing	PQG, ENAMMC,PDRRD, SFDRR
8.% of national and regional roads passable (good and reasonable) throughout the year	SDG, PQG, ENAMMC,PDRRD, SFDRR, African Strategy
9.% of annual GDP lost through disasters	SDG, PQG, ENAMMC,PDRRD, SFDRR, African Strategy

NATIONAL PLANIFICATION





THANK YOU